

For Research Use Only

KLF9 Recombinant antibody, PBS Only (Detector)

Catalog Number: 83183-4-PBS



Basic Information

Catalog Number:

83183-4-PBS

Concentration:

1mg/ml

Source:

Rabbit

Isotype:

IgG

Immunogen Catalog Number:

AG34411

GenBank Accession Number:

BC074880

GeneID (NCBI):

687

UNIPROT ID:

Q13886

Full Name:

Kruppel-like factor 9

Calculated MW:

27 kDa

Purification Method:

Protein A purification

CloneNo.:

230436H2

Applications

Tested Applications:

WB, FC (Intra), Cytometric bead array, Indirect ELISA

Species Specificity:

human

Background Information

Storage

Storage:

Store at -80°C.

The product is shipped with ice packs. Upon receipt, store it immediately at -80°C

Storage Buffer:

PBS only, pH7.3

For technical support and original validation data for this product please contact:

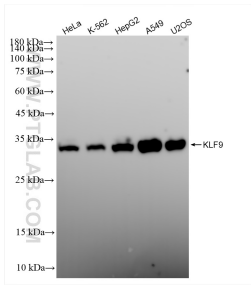
T: 4006900926

E: Proteintech-CN@ptglab.com

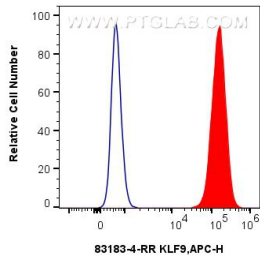
W: ptgcn.com

This product is exclusively available under Proteintech Group brand and is not available to purchase from any other manufacturer.

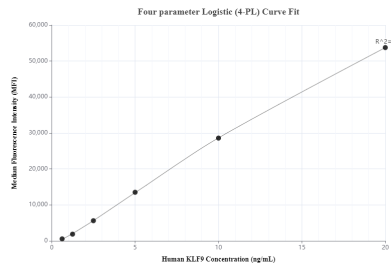
Selected Validation Data



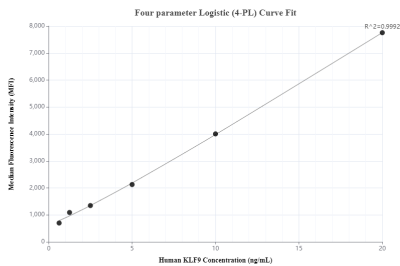
Various lysates were subjected to SDS PAGE followed by western blot with 83183-4-RR (KLF9 antibody) at dilution of 1:10000 incubated at room temperature for 1.5 hours. This data was developed using the same antibody clone with 83183-4-PBS in a different storage buffer formulation.



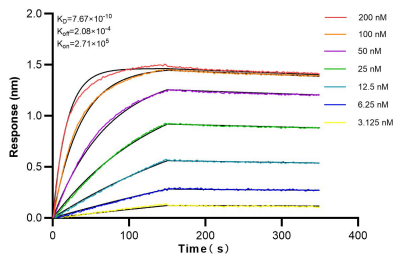
1x10⁶ A549 cells were intracellularly stained with 0.25 ug KLF9 Recombinant antibody (83183-4-RR, Clone:230436H2) and APC-Conjugated AffiniPure Goat Anti-Rabbit IgG(H+L)(red), or 0.25 ug Isotype Control (blue). Cells were fixed and permeabilized with True-Nuclear Transcription Factor Buffer Set. This data was developed using the same antibody clone with 83183-4-PBS in a different storage buffer formulation.



Cytometric bead array standard curve of MP00148-1, KLF9 Recombinant Matched Antibody Pair, PBS Only. Capture antibody: 83183-3-PBS. Detection antibody: 83183-4-PBS. Standard: Ag34411. Range: 0.625-20 ng/mL.



Cytometric bead array standard curve of MP00148-2, KLF9 Recombinant Matched Antibody Pair, PBS Only. Capture antibody: 83183-2-PBS. Detection antibody: 83183-4-PBS. Standard: Ag34411. Range: 0.625-20 ng/mL.



Biolayer interferometry (BLI) kinetic assays of 83183-4-RR against Human KLF9 were performed. The affinity constant is 0.767 nM.