

For Research Use Only

MAP7D1 Recombinant antibody, PBS Only (Capture)

Catalog Number: 83173-1-PBS



Basic Information

Catalog Number:	83173-1-PBS	GenBank Accession Number:	BC003083	Purification Method:	Protein A purification
Size:	1mg/ml	GeneID (NCBI):	55700	CloneNo.:	230424A6
Source:	Rabbit	UNIPROT ID:	Q3KQU3		
Isotype:	IgG	Full Name:	MAP7 domain containing 1		
Immunogen Catalog Number:	AG14385	Calculated MW:	841 aa, 93 kDa		
		Observed MW:	120-130 kDa		

Applications

Tested Applications:
WB, IF/ICC, Cytometric bead array, Indirect ELISA

Species Specificity:
human

Background Information

MAP7D1 also known as RPRC1, PARCC1, belongs to the MAP7 family. The MAP7 (Microtubule Associated Protein 7) protein family, consisting of four members, MAP7, MAP7D1, and MAP7D2, MAP7D3, is the microtubule-associated protein involved in various cellular processes regulating microtubule dynamics, organization, and stability (PMID: 28980356). MAP7D1 exhibits the highest conservation with MAP7 and was recently identified as a phosphorylation substrate of DCLK1 in cortical neurons. MAP7D1 is required to maintain MT acetylation, which is enriched in stable MTs (PMID: 35470240). Consistent with the literature, the apparent molecular mass of MAP7D1 detected by Western blot was 120-130 kDa (PMID: 35470240, 37550720).

Storage

Storage:
Store at -80°C.
The product is shipped with ice packs. Upon receipt, store it immediately at -80°C
Storage Buffer:
PBS Only

For technical support and original validation data for this product please contact:

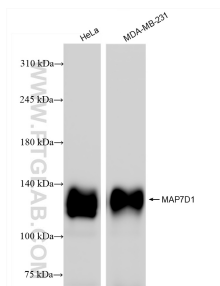
T: 4006900926

E: Proteintech-CN@ptglab.com

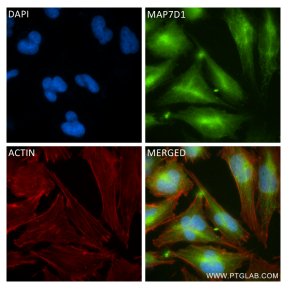
W: ptgcn.com

This product is exclusively available under Proteintech Group brand and is not available to purchase from any other manufacturer.

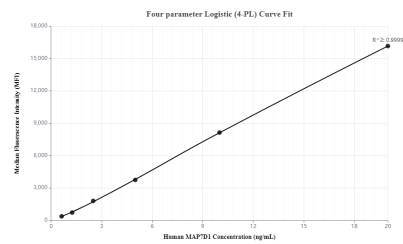
Selected Validation Data



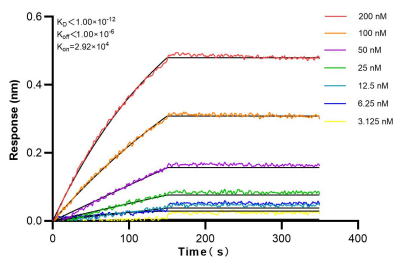
Various lysates were subjected to SDS PAGE followed by western blot with 83173-1-RR (MAP7D1 antibody) at dilution of 1:5000 incubated at room temperature for 1.5 hours. This data was developed using the same antibody clone with 83173-1-PBS in a different storage buffer formulation.



Immunofluorescent analysis of (4% PFA) fixed U-251 cells using MAP7D1 antibody (83173-1-RR, Clone: 230424A6) at dilution of 1:400 and CoraLite®488-Conjugated Goat Anti-Rabbit IgG(H+L) (SA00013-2), CL594-Phalloidin (red). This data was developed using the same antibody clone with 83173-1-PBS in a different storage buffer formulation.



Cytometric bead array standard curve of MP00212-2, MAP7D1 Recombinant Matched Antibody Pair, PBS Only. Capture antibody: 83173-1-PBS. Detection antibody: 83173-3-PBS. Standard: Ag14385. Range: 0.625-20 ng/mL.



Biolayer interferometry (BLI) kinetic assays of 83173-1-RR against Human MAP7D1 were performed. The affinity constant is below 1 pM.