

For Research Use Only

USP8 Recombinant antibody, PBS Only (Capture)

Catalog Number: 83172-2-PBS



Basic Information

Catalog Number: 83172-2-PBS	GenBank Accession Number: BC110590	Purification Method: Protein A purification
Size: 1mg/ml	GeneID (NCBI): 9101	CloneNo.: 240016D3
Source: Rabbit	UNIPROT ID: P40818	
Isotype: IgG	Full Name: ubiquitin specific peptidase 8	
Immunogen Catalog Number: AG27143	Calculated MW: 1118 aa, 128 kDa	

Applications

Tested Applications:
WB, IF/ICC, FC (Intra), Cytometric bead array,
Sandwich ELISA, Indirect ELISA, Sample test

Species Specificity:
human

Background Information

Storage

Storage:
Store at -80°C.
The product is shipped with ice packs. Upon receipt, store it immediately at -80°C

Storage Buffer:
PBS Only

For technical support and original validation data for this product please contact:

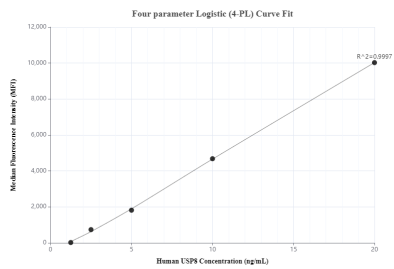
T: 4006900926

E: Proteintech-CN@ptglab.com

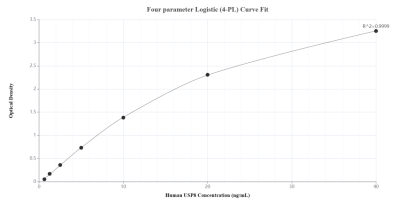
W: ptgcn.com

This product is exclusively available under Proteintech Group brand and is not available to purchase from any other manufacturer.

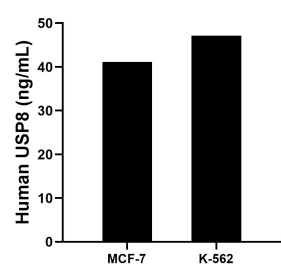
Selected Validation Data



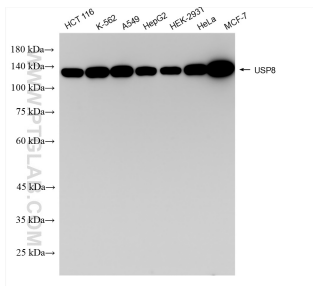
Cytometric bead array standard curve of MP00188-1, USP8 Recombinant Matched Antibody Pair, PBS Only. Capture antibody: 83172-2-PBS. Detection antibody: 83172-1-PBS. Standard: Ag27143. Range: 1.25-20 ng/mL



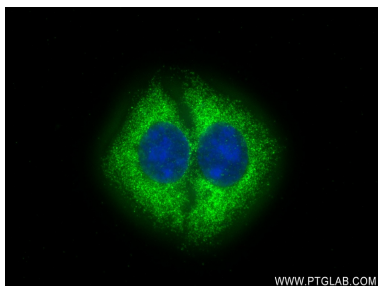
Sandwich ELISA standard curve of MP00188-1, Human USP8 Recombinant Matched Antibody Pair - PBS only. 83172-2-PBS was coated to a plate as the capture antibody and incubated with serial dilutions of standard Ag27143. 83172-1-PBS was HRP conjugated as the detection antibody. Range: 0.625-40 ng/mL



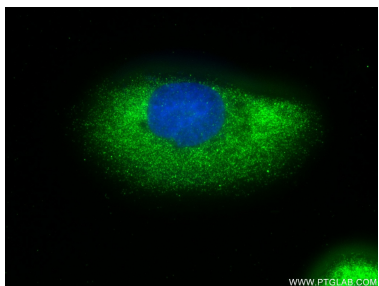
The mean USP8 concentration was determined to be 41.15 ng/mL in MCF-7 cell extract based on a 4.30 mg/mL extract load and 47.12 ng/mL in K-562 cell extract based on a 4.50 mg/mL extract load.



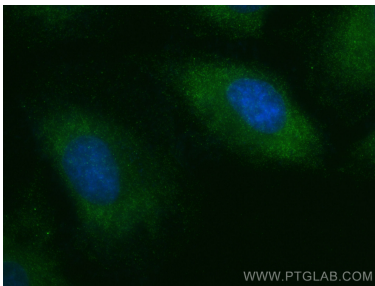
Various lysates were subjected to SDS PAGE followed by western blot with 83172-2-RR (USP8 antibody) at dilution of 1:10000 incubated at room temperature for 1.5 hours. This data was developed using the same antibody clone with 83172-2-PBS in a different storage buffer formulation.



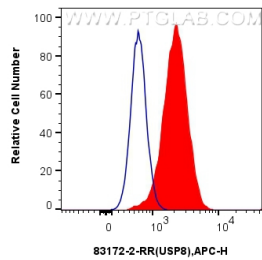
Immunofluorescent analysis of (4% PFA) fixed U2OS cells using USP8 antibody (83172-2-RR, Clone: 240016D3) at dilution of 1:250 and CoraLite®488-Conjugated AffiniPure Goat Anti-Rabbit IgG(H+L) (SA00013-2). This data was developed using the same antibody clone with 83172-2-PBS in a different storage buffer formulation.



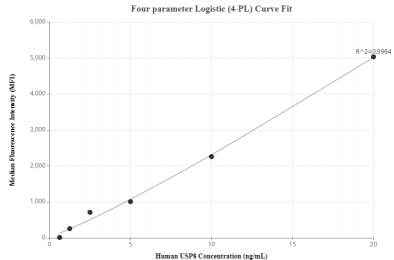
Immunofluorescent analysis of (4% PFA) fixed U2OS cells using USP8 antibody (83172-2-RR, Clone: 240016D3) at dilution of 1:250 and CoraLite®488-Conjugated AffiniPure Goat Anti-Rabbit IgG(H+L) (SA00013-2). This data was developed using the same antibody clone with 83172-2-PBS in a different storage buffer formulation.



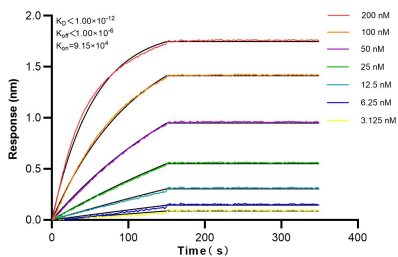
Immunofluorescent analysis of (-20°C Ethanol) fixed HeLa cells using USP8 antibody (83172-2-RR, Clone: 240016D3) at dilution of 1:1000 and CoraLite®488-Conjugated Goat Anti-Rabbit IgG(H+L) (SA00013-2). This data was developed using the same antibody clone with 83172-2-PBS in a different storage buffer formulation.



1x10⁶ A549 cells were intracellularly stained with 0.25 ug USP8 Recombinant antibody (83172-2-RR, Clone:240016D3) and APC-Conjugated AffiniPure Goat Anti-Rabbit IgG(H+L)(red), or 0.25 ug Isotype Control (blue). Cells were fixed with 4% PFA and permeabilized with Flow Cytometry Perm Buffer (PF00011-C). This data was developed using the same antibody clone with 83172-2-PBS in a different storage buffer formulation.



Cytometric bead array standard curve of MP00188-2, USP8 Recombinant Matched Antibody Pair, PBS Only. Capture antibody: 83172-2-PBS. Detection antibody: 83172-3-PBS. Standard: Ag27143. Range: 0.625-20 ng/mL



Biolayer interferometry (BLI) kinetic assays of 83172-2-RR against Human USP8 were performed. The affinity constant is below 1 pM.