

For Research Use Only

# USP8 Recombinant antibody, PBS Only (Detector)

Catalog Number: 83172-1-PBS



## Basic Information

Catalog Number:	83172-1-PBS	GenBank Accession Number:	BC110590	Purification Method:	Protein A purification
Size:	1mg/ml	GeneID (NCBI):	9101	CloneNo.:	240016A3
Source:	Rabbit	UNIPROT ID:	P40818		
Isotype:	IgG	Full Name:	ubiquitin specific peptidase 8		
Immunogen Catalog Number:	AG27143	Calculated MW:	1118 aa, 128 kDa		

## Applications

**Tested Applications:**  
Cytometric bead array, Sandwich ELISA, Indirect ELISA, Sample test

**Species Specificity:**  
human

## Background Information

### Storage

**Storage:**  
Store at -80°C.  
**The product is shipped with ice packs. Upon receipt, store it immediately at -80°C**

**Storage Buffer:**  
PBS Only

For technical support and original validation data for this product please contact:

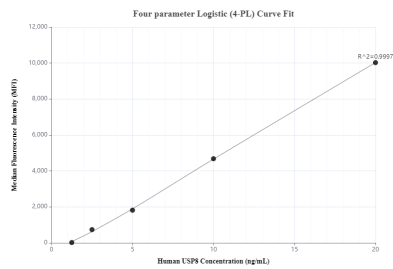
T: 4006900926

E: Proteintech-CN@ptglab.com

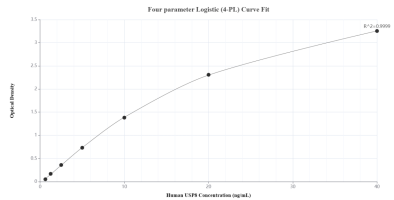
W: ptgcn.com

**This product is exclusively available under Proteintech Group brand and is not available to purchase from any other manufacturer.**

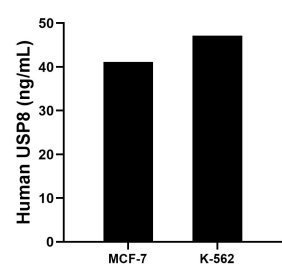
## Selected Validation Data



Cytometric bead array standard curve of MP00188-1, USP8 Recombinant Matched Antibody Pair, PBS Only. Capture antibody: 83172-2-PBS. Detection antibody: 83172-1-PBS. Standard: Ag27143. Range: 1.25-20 ng/mL.



Sandwich ELISA standard curve of MP00188-1, Human USP8 Recombinant Matched Antibody Pair - PBS only. 83172-2-PBS was coated to a plate as the capture antibody and incubated with serial dilutions of standard Ag27143. 83172-1-PBS was HRP conjugated as the detection antibody. Range: 0.625-40 ng/mL.



The mean USP8 concentration was determined to be 41.15 ng/mL in MCF-7 cell extract based on a 4.30 mg/mL extract load and 47.12 ng/mL in K-562 cell extract based on a 4.50 mg/mL extract load.