

For Research Use Only

# SMAD4 Recombinant antibody, PBS Only (Detector)

Catalog Number: 83169-2-PBS



## Basic Information

Catalog Number: 83169-2-PBS	GenBank Accession Number: BC002379	Purification Method: Protein A purification
Size: 1mg/ml	GeneID (NCBI): 4089	CloneNo.: 240026D10
Source: Rabbit	UNIPROT ID: Q13485	
Isotype: IgG	Full Name: SMAD family member 4	
Immunogen Catalog Number: AG0299	Calculated MW: 60 kDa	

## Applications

**Tested Applications:**  
Cytometric bead array, Sandwich ELISA, Indirect ELISA, Sample test

**Species Specificity:**  
human

## Background Information

### Storage

**Storage:**  
Store at -80°C.  
**The product is shipped with ice packs. Upon receipt, store it immediately at -80°C**

**Storage Buffer:**  
PBS Only

For technical support and original validation data for this product please contact:

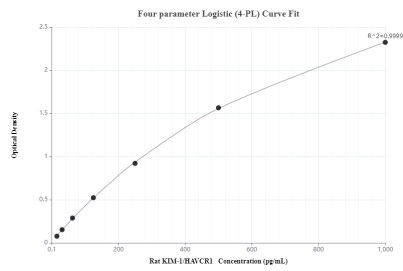
T: 4006900926

E: [Proteintech-CN@ptglab.com](mailto:Proteintech-CN@ptglab.com)

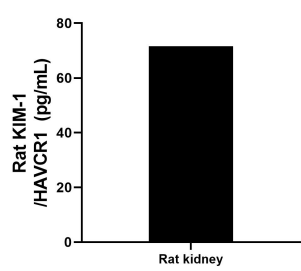
W: [ptgcn.com](http://ptgcn.com)

**This product is exclusively available under Proteintech Group brand and is not available to purchase from any other manufacturer.**

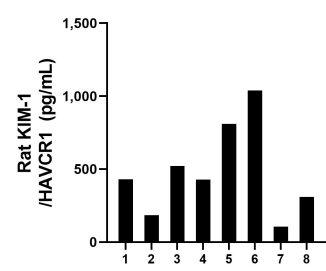
Selected Validation Data



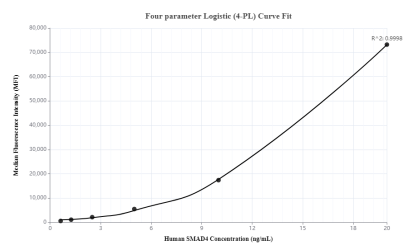
Sandwich ELISA standard curve of MP00213-3, Rat KIM-1/HAVCR1 Monoclonal Matched Antibody Pair - PBS only. 83221-1-PBS was coated to a plate as the capture antibody and incubated with serial dilutions of standard Eg0597. 83169-2-PBS was HRP conjugated as the detection antibody. Range: 15.6-1000 pg/mL



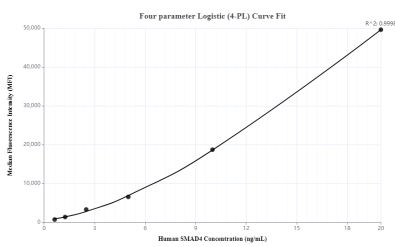
Organs from 2 rats were rinsed with PBS to remove excess blood, chopped into 1-2 mm pieces, homogenized in 5-10 mL of PBS in a tissue homogenizer, and stored at  $\leq -80^{\circ}\text{C}$  5 min. After two freeze-thaw cycles were performed to break the cell membranes, the homogenates were centrifuged for 5 minutes at 5000 x g to remove particulate. Homogenates from rat kidney tissue were assayed for rat KIM-1/HAVCR1 and measured 71.6 pg/mL



Serum of eight individual healthy rats were measured. The rat KIM-1/HAVCR1 concentration of detected samples was determined to be 478.5 pg/mL with a range of 105.6-1,038.5 pg/mL



Cytometric bead array standard curve of MP00267-1, SMAD4 Recombinant Matched Antibody Pair, PBS Only. Capture antibody: 83169-4-PBS. Detection antibody: 83169-2-PBS. Standard: Ag0299. Range: 0.625-20 ng/mL



Cytometric bead array standard curve of MP00267-3, SMAD4 Recombinant Matched Antibody Pair, PBS Only. Capture antibody: 83169-3-PBS. Detection antibody: 83169-2-PBS. Standard: Ag0299. Range: 0.625-20 ng/mL