

For Research Use Only

TSG-6 Recombinant antibody, PBS Only (Detector)

Catalog Number: 83163-3-PBS



Basic Information

Catalog Number:

83163-3-PBS

Size:

1 mg/ml

Source:

Rabbit

Isotype:

IgG

Immunogen Catalog Number:

AG3885

GenBank Accession Number:

BC030205

GeneID (NCBI):

7130

UNIPROT ID:

P98066

Full Name:

tumor necrosis factor, alpha-induced protein 6

Calculated MW:

277 aa, 31 kDa

Purification Method:

Protein A purification

CloneNo.:

230438H4

Applications

Tested Applications:

Cytometric bead array, Sandwich ELISA, Indirect ELISA, Sample test

Species Specificity:

human

Background Information

Storage

Storage:

Store at -80°C.

The product is shipped with ice packs. Upon receipt, store it immediately at -80°C

Storage Buffer:

PBS Only

For technical support and original validation data for this product please contact:

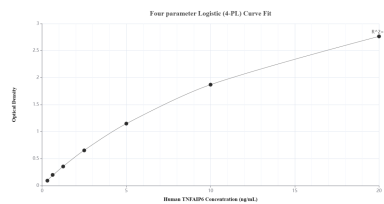
T: 4006900926

E: Proteintech-CN@ptglab.com

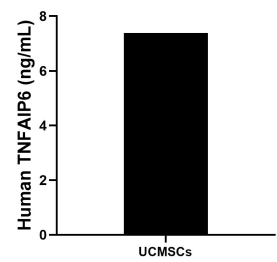
W: ptgcn.com

This product is exclusively available under Proteintech Group brand and is not available to purchase from any other manufacturer.

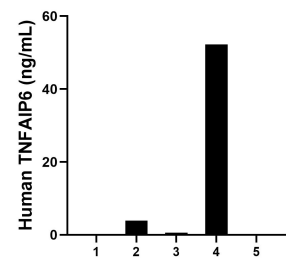
Selected Validation Data



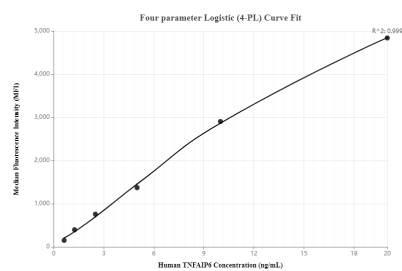
Sandwich ELISA standard curve of MP00218-3, Human TSG-6 Recombinant Matched Antibody Pair - PBS only. 83163-4-PBS was coated to a plate as the capture antibody and incubated with serial dilutions of standard Ag3885. 83163-3-PBS was HRP conjugated as the detection antibody. Range: 0.313-20 ng/mL



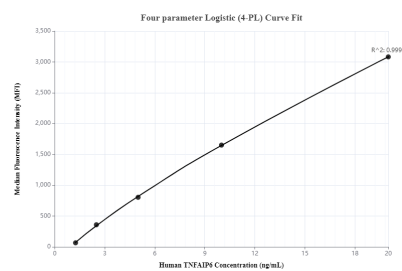
The mean TSG-6 concentration was determined to be 7.39 ng/mL in UCMSCs cell extract based on a 3.0 mg/mL extract load.



Serum of five individual healthy human donors was measured. The TSG-6 concentration of detected samples was determined to be 11.38 ng/mL with a range of 0.03-52.26 ng/mL.



Cytometric bead array standard curve of MP00218-1, TSG-6 Recombinant Matched Antibody Pair, PBS Only. Capture antibody: 83163-2-PBS. Detection antibody: 83163-3-PBS. Standard: Ag3885. Range: 0.625-20 ng/mL



Cytometric bead array standard curve of MP00218-2, TSG-6 Recombinant Matched Antibody Pair, PBS Only. Capture antibody: 83163-1-PBS. Detection antibody: 83163-3-PBS. Standard: Ag3885. Range: 1.25-20 ng/mL