

For Research Use Only

IFI35 Recombinant monoclonal antibody

Catalog Number: 83160-2-RR



Basic Information

Catalog Number:

83160-2-RR

Source:

Rabbit

Isotype:

IgG

Immunogen Catalog Number:

AG34653

GenBank Accession Number:

BC001356

GeneID (NCBI):

3430

UNIPROT ID:

P80217

Full Name:

interferon-induced protein 35

Calculated MW:

31 kDa

Purification Method:

Protein A purification

CloneNo.:

240063C6

Recommended Dilutions:

IF/ICC: 1:125-1:500

FC (Intra): 0.25 ug per 10⁶ cells in a 100 µl suspension

Applications

Tested Applications:

IF/ICC, FC (Intra), ELISA

Species Specificity:

human

Positive Controls:

IF/ICC : HeLa cells,

FC (Intra) : A549 cells, HeLa cells

Background Information

IFI35 (interferon induced protein 35), also known as IFP35. It is expected to be located in cytoplasm, nucleus and extracellular space. The protein is expressed in a wide range of cell types, including fibroblasts, macrophages, and epithelial cells. Involved in several processes, including macrophage activation involved in immune response; positive regulation of defense response; and regulation of signal transduction. And the calculated molecular weight of IFI35 is 31 kDa.

Storage

Storage:

Store at -20°C. Stable for one year after shipment.

Storage Buffer:

PBS with 0.02% sodium azide and 50% glycerol, pH7.3

Aliquoting is unnecessary for -20°C storage

For technical support and original validation data for this product please contact:

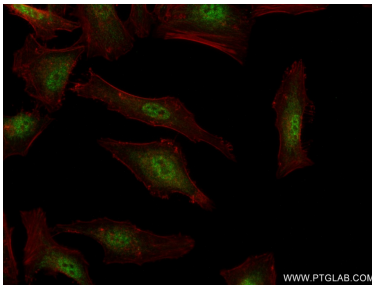
T: 4006900926

E: Proteintech-CN@ptglab.com

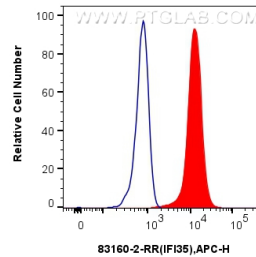
W: ptgcn.com

This product is exclusively available under Proteintech Group brand and is not available to purchase from any other manufacturer.

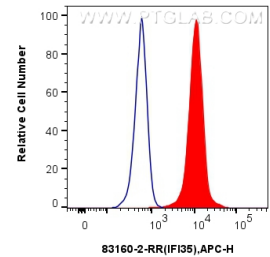
Selected Validation Data



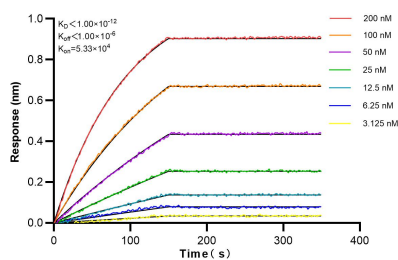
Immunofluorescent analysis of (4% PFA) fixed HeLa cells using IFI35 antibody (83160-2-RR, Clone: 240063C6) at dilution of 1:250 and CoraLite®488-Conjugated AffiniPure Goat Anti-Rabbit IgG(H+L) (SA00013-2), CL594-Phalloidin (red).



1×10^6 A549 cells were intracellularly stained with 0.25 μ g Ifi35 Recombinant Antibody (83160-2-RR, Clone:240063C6) and APC-Conjugated AffiniPure Goat Anti-Rabbit IgG(H+L)(red), or 0.25 μ g rabbit IgG isotype control (blue). Cells were fixed and permeabilized with True-Nuclear Transcription Factor Buffer Set.



1×10^6 HeLa cells were intracellularly stained with 0.25 μ g Ifi35 Recombinant Antibody (83160-2-RR, Clone:240063C6) and APC-Conjugated AffiniPure Goat Anti-Rabbit IgG(H+L)(red), or 0.25 μ g rabbit IgG isotype control (blue). Cells were fixed and permeabilized with True-Nuclear Transcription Factor Buffer Set.



Biolayer interferometry (BLI) kinetic assays of 83160-2-RR against Human IFI35 were performed. The affinity constant is below 1 pM.