

For Research Use Only

IFI35 Recombinant antibody, PBS Only (Capture)

Catalog Number: 83160-2-PBS



Basic Information

Catalog Number:	83160-2-PBS	GenBank Accession Number:	BC001356	Purification Method:	Protein A purification
Size:	1mg/ml	GeneID (NCBI):	3430	CloneNo.:	240063C6
Source:	Rabbit	UNIPROT ID:	P80217		
Isotype:	IgG	Full Name:	interferon-induced protein 35		
Immunogen Catalog Number:	AG34653	Calculated MW:	31 kDa		

Applications

Tested Applications:
IF/ICC, FC (Intra), Cytometric bead array, Indirect ELISA

Species Specificity:
human

Background Information

IFI35 (interferon induced protein 35), also known as IFP35. It is expected to be located in cytoplasm, nucleus and extracellular space. The protein is expressed in a wide range of cell types, including fibroblasts, macrophages, and epithelial cells. Involved in several processes, including macrophage activation involved in immune response; positive regulation of defense response; and regulation of signal transduction. And the calculated molecular weight of IFI35 is 31 kDa.

Storage

Storage:
Store at -80°C.
The product is shipped with ice packs. Upon receipt, store it immediately at -80°C

Storage Buffer:
PBS Only

For technical support and original validation data for this product please contact:

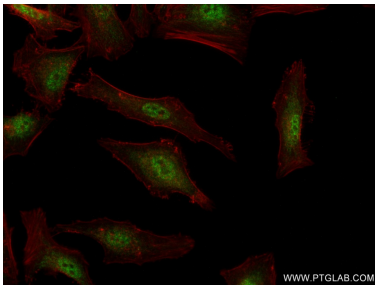
T: 4006900926

E: Proteintech-CN@ptglab.com

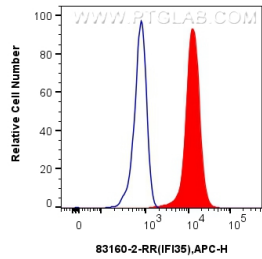
W: ptgcn.com

This product is exclusively available under Proteintech Group brand and is not available to purchase from any other manufacturer.

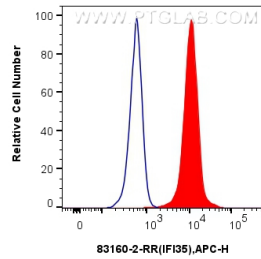
Selected Validation Data



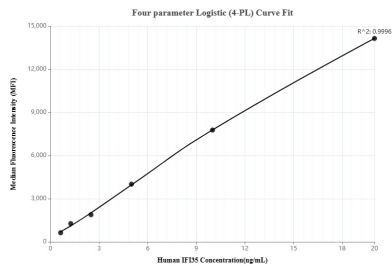
Immunofluorescent analysis of (4% PFA) fixed HeLa cells using IFI35 antibody (83160-2-RR, Clone: 240063C6) at dilution of 1:250 and CoraLite®488-Conjugated AffiniPure Goat Anti-Rabbit IgG(H+L) (SA00013-2), CL594-Phalloidin (red). This data was developed using the same antibody clone with 83160-2-PBS in a different storage buffer formulation.



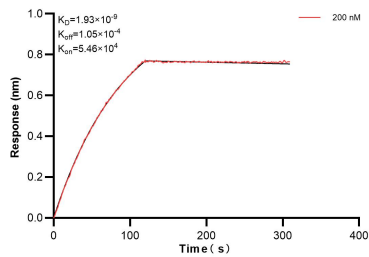
1x10⁶ A549 cells were intracellularly stained with 0.25 ug Ifi35 Recombinant Antibody (83160-2-RR, Clone:240063C6) and APC-Conjugated AffiniPure Goat Anti-Rabbit IgG(H+L)(red), or 0.25 ug Rabbit IgG control Rabbit PolyAb (30000-0-AP) (blue). Cells were fixed and permeabilized with True-Nuclear Transcription Factor Buffer Set. This data was developed using the same antibody clone with 83160-2-PBS in a different storage buffer formulation.



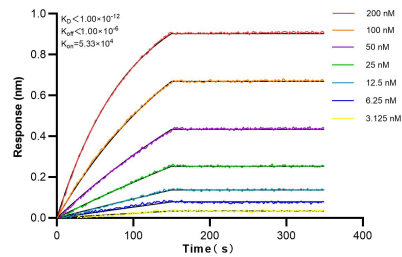
1x10⁶ HeLa cells were intracellularly stained with 0.25 ug Ifi35 Recombinant Antibody (83160-2-RR, Clone:240063C6) and APC-Conjugated AffiniPure Goat Anti-Rabbit IgG(H+L)(red), or 0.25 ug Rabbit IgG control Rabbit PolyAb (30000-0-AP) (blue). Cells were fixed and permeabilized with True-Nuclear Transcription Factor Buffer Set. This data was developed using the same antibody clone with 83160-2-PBS in a different storage buffer formulation.



Cytometric bead array standard curve of MP00191-2, IFI35 Recombinant Matched Antibody Pair, PBS Only. Capture antibody: 83160-2-PBS. Detection antibody: 83160-1-PBS. Standard: Ag34653. Range: 0.625-20 ng/mL



Biolayer interferometry (BLI) kinetic assay of 83160-2-PBS against Human IFI35 was performed. The affinity constant is 1.93 nM.



Biolayer interferometry (BLI) kinetic assays of 83160-2-RR against Human IFI35 were performed. The affinity constant is below 1 pM.