

For Research Use Only

# STX1A Recombinant antibody

Catalog Number: 83159-6-RR



## Basic Information

### Catalog Number:

83159-6-RR

### Size:

1000 ug/ml

### Source:

Rabbit

### Isotype:

IgG

### GenBank Accession Number:

NM\_004603

### GeneID (NCBI):

6804

### UNIPROT ID:

Q16623

### Full Name:

syntaxin 1A (brain)

### Calculated MW:

33 kDa

### Observed MW:

33-35 kDa

### Purification Method:

Protein A purification

### CloneNo.:

230470F5

### Recommended Dilutions:

WB 1:1000-1:6000

IHC 1:500-1:2000

IF-P 1:250-1:1000

## Applications

### Tested Applications:

WB, IHC, IF-P, ELISA

### Species Specificity:

human, mouse, rat

**Note-IHC: suggested antigen retrieval with TE buffer pH 9.0; (\*) Alternatively, antigen retrieval may be performed with citrate buffer pH 6.0**

### Positive Controls:

WB : mouse brain tissue, rat brain tissue, human brain tissue

IHC : mouse brain tissue,

IF-P : mouse cerebellum tissue,

## Background Information

Syntaxins are a family of transmembrane proteins that belong to the SNARE complex (PMID: 11737951). In conjunction with other SNAREs and with the cytoplasmic NSF and SNAP proteins, syntaxins mediate vesicle fusion in diverse vesicular transport processes along the exocytic and endocytic pathways (PMID: 11737951). Syntaxin 1A (STX1A) and 1B (STX1B), two closely related isoforms of syntaxin 1, are involved in synaptic vesicle docking and fusion during neurotransmitter release (PMID: 7690687; 1321498; 18691641). This antibody recognizes human STX1A.

## Storage

### Storage:

Store at -20°C. Stable for one year after shipment.

### Storage Buffer:

PBS with 0.02% sodium azide and 50% glycerol pH 7.3.

Aliquoting is unnecessary for -20°C storage

For technical support and original validation data for this product please contact:

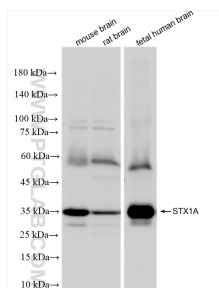
T: 4006900926

E: [Proteintech-CN@ptglab.com](mailto:Proteintech-CN@ptglab.com)

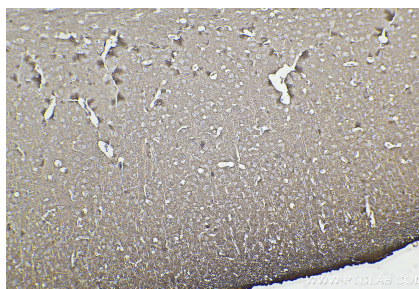
W: [ptgcn.com](http://ptgcn.com)

This product is exclusively available under Proteintech Group brand and is not available to purchase from any other manufacturer.

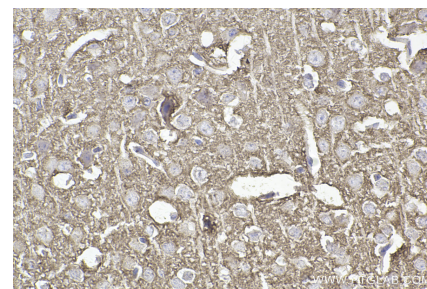
## Selected Validation Data



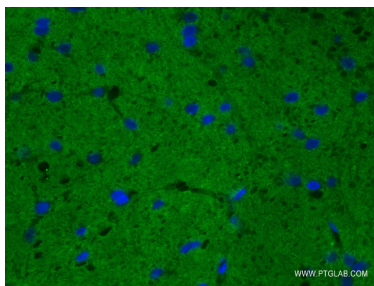
Various lysates were subjected to SDS PAGE followed by western blot with 83159-6-RR (STX1A antibody) at dilution of 1:3000 incubated at room temperature for 1.5 hours.



Immunohistochemical analysis of paraffin-embedded mouse brain tissue slide using 83159-6-RR (STX1A antibody) at dilution of 1:1000 (under 10x lens). Heat mediated antigen retrieval with Tris-EDTA buffer (pH 9.0).



Immunohistochemical analysis of paraffin-embedded mouse brain tissue slide using 83159-6-RR (STX1A antibody) at dilution of 1:1000 (under 40x lens). Heat mediated antigen retrieval with Tris-EDTA buffer (pH 9.0).



Immunofluorescent analysis of (4% PFA) fixed mouse cerebellum tissue using STX1A antibody (83159-6-RR, Clone: 230470F5) at dilution of 1:500 and CoraLite®488-Conjugated AffiniPure Goat Anti-Rabbit IgG(H+L) (SA00013-2).