

For Research Use Only

STX1A Recombinant antibody, PBS Only (Capture/Detector)

Catalog Number: 83159-3-PBS



Basic Information

Catalog Number:

83159-3-PBS

Size:

1mg/ml

Source:

Rabbit

Isotype:

IgG

GenBank Accession Number:

NM_004603

GeneID (NCBI):

6804

UNIPROT ID:

Q16623

Full Name:

syntaxin 1A (brain)

Calculated MW:

33 kDa

Purification Method:

Protein A purification

CloneNo.:

240018D9

Applications

Tested Applications:

Cytometric bead array, Sandwich ELISA, Indirect ELISA,
Sample test

Species Specificity:

human

Background Information

Storage

Storage:

Store at -80°C.

The product is shipped with ice packs. Upon receipt, store it immediately at -80°C

Storage Buffer:

PBS Only

For technical support and original validation data for this product please contact:

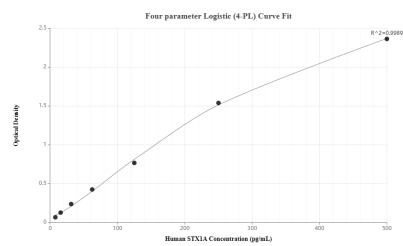
T: 4006900926

E: Proteintech-CN@ptglab.com

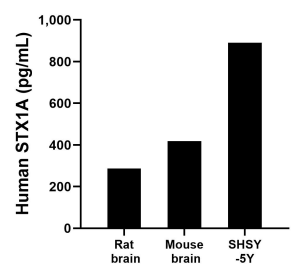
W: ptgcn.com

This product is exclusively available under Proteintech Group brand and is not available to purchase from any other manufacturer.

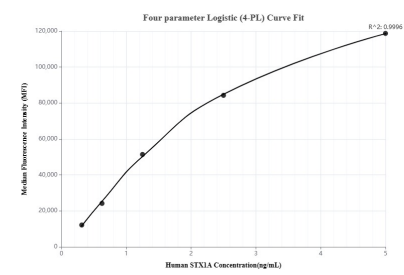
Selected Validation Data



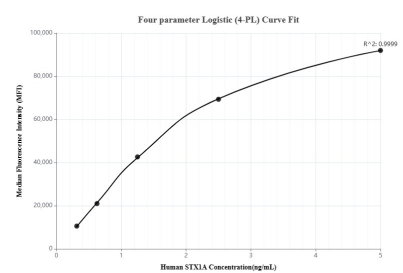
Sandwich ELISA standard curve of MP00172-4, Human STX1A Monoclonal Matched Antibody Pair - PBS only. 83159-1-PBS was coated to a plate as the capture antibody and incubated with serial dilutions of standard SY01214. 83159-3-PBS was HRP conjugated as the detection antibody. Range: 7.8-500 pg/mL.



The mean human STX1A concentration was determined to be 287.3 pg/mL in rat brain extract based on a 3 mg/mL extract load, 418.7 pg/mL in mouse brain extract based on a 2 mg/mL extract load and 890.3 pg/mL in SHSY-5Y cell extract based on a 3 mg/mL extract load.



Cytofluorimetric bead array standard curve of MP00172-1, STX1A Recombinant Matched Antibody Pair, PBS Only. Capture antibody: 83159-3-PBS. Detection antibody: 83159-4-PBS. Standard: SY01214. Range: 0.313-5 ng/mL.



Cytofluorimetric bead array standard curve of MP00172-3, STX1A Recombinant Matched Antibody Pair, PBS Only. Capture antibody: 83159-3-PBS. Detection antibody: 83159-1-PBS. Standard: SY01214. Range: 0.313-5 ng/mL.