

For Research Use Only

Mouse MCP-1/CCL2 Recombinant antibody, PBS Only (Capture/Detector)

Catalog Number: 83157-4-PBS



Basic Information

Catalog Number:

83157-4-PBS

Size:

1 mg/ml

Source:

Rabbit

Isotype:

IgG

GenBank Accession Number:

NM-011333

GeneID (NCBI):

20296

Full Name:

chemokine (C-C motif) ligand 2

Purification Method:

Protein A purification

CloneNo.:

230483H3

Applications

Tested Applications:

Cytometric bead array, Sandwich ELISA, Indirect ELISA,
Sample test

Species Specificity:

mouse

Background Information

Storage

Storage:

Store at -80°C.

The product is shipped with ice packs. Upon receipt, store it immediately at -80°C

Storage Buffer:

PBS Only

For technical support and original validation data for this product please contact:

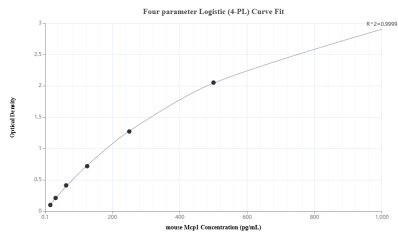
T: 4006900926

E: Proteintech-CN@ptglab.com

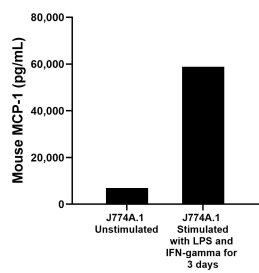
W: ptgcn.com

This product is exclusively available under Proteintech Group brand and is not available to purchase from any other manufacturer.

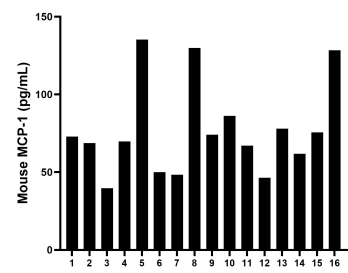
Selected Validation Data



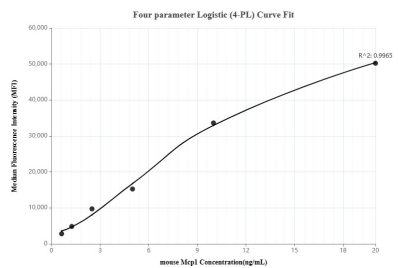
Sandwich ELISA standard curve of MP00168-4, Mouse MCP-1 Recombinant Matched Antibody Pair - PBS only. 83157-6-PBS was coated to a plate as the capture antibody and incubated with serial dilutions of standard Eg0427. 83157-4-PBS was HRP conjugated as the detection antibody. Range: 15.6-1000 pg/mL



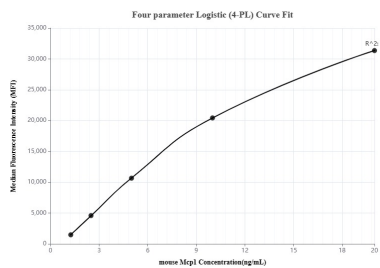
J774A.1 mouse reticulum cell sarcoma macrophage cells (1×10^6 cells/mL) were cultured for 3 days in DMEM containing 10% fetal bovine serum. Cells were untreated or treated with 500 ng/mL recombinant mouse IFN- γ and 10 ng/mL LPS. An aliquot of the cell culture supernatants were removed, assayed for mouse MCP-1, and measured 6,956.6 pg/mL and 58,869.9 pg/mL



Serum of sixteen mice was measured. The MCP-1 concentration of detected samples was determined to be 77.0 pg/mL with a range of 39.7 - 135.3 pg/mL



Cytometric bead array standard curve of MP00168-1, Mouse Ccl2 Recombinant Matched Antibody Pair, PBS Only. Capture antibody: 83157-4-PBS. Detection antibody: 83157-2-PBS. Standard: Eg0427. Range: 0.625-20 ng/mL



Cytometric bead array standard curve of MP00168-3, Mouse Ccl2 Recombinant Matched Antibody Pair, PBS Only. Capture antibody: 83157-4-PBS. Detection antibody: 83157-1-PBS. Standard: Eg0427. Range: 1.25-20 ng/mL