

For Research Use Only

# CD276 Recombinant antibody, PBS Only (Capture)

Catalog Number: 83152-2-PBS



## Basic Information

Catalog Number:

83152-2-PBS

Size:

1mg/ml

Source:

Rabbit

Isotype:

IgG

GenBank Accession Number:

NM\_001024736

GeneID (NCBI):

80381

UNIPROT ID:

Q5ZPR3

Full Name:

CD276 molecule

Calculated MW:

57 kDa

Purification Method:

Protein A purification

CloneNo.:

230305C1

## Applications

Tested Applications:

Cytometric bead array, Sandwich ELISA, Indirect ELISA, Sample test

Species Specificity:

human

## Background Information

### Storage

Storage:

Store at -80°C.

**The product is shipped with ice packs. Upon receipt, store it immediately at -80°C**

Storage Buffer:

PBS Only

For technical support and original validation data for this product please contact:

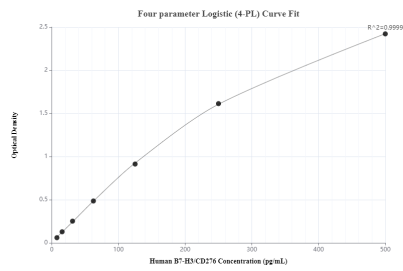
T: 4006900926

E: [Proteintech-CN@ptglab.com](mailto:Proteintech-CN@ptglab.com)

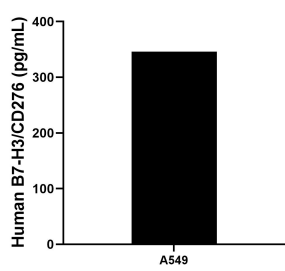
W: [ptgcn.com](http://ptgcn.com)

**This product is exclusively available under Proteintech Group brand and is not available to purchase from any other manufacturer.**

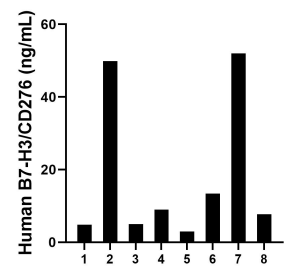
Selected Validation Data



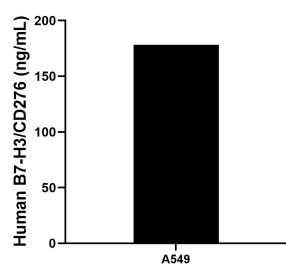
Sandwich ELISA standard curve of MP00248-3, Human B7-H3/CD276 Recombinant Matched Antibody Pair - PBS only. 83152-2-PBS was coated to a plate as the capture antibody and incubated with serial dilutions of standard Eg0075. 83152-1-PBS was HRP conjugated as the detection antibody. Range: 7.8-500 pg/mL



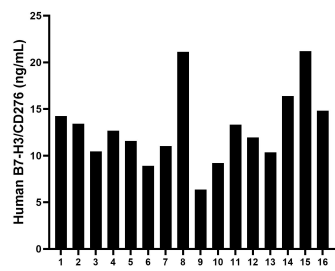
A549 were cultured in DMEM supplemented with 10% fetal bovine serum, 2.5 mM L-glutamine, 100 U/mL penicillin, and 100 µg/mL streptomycin sulfate. An aliquot of the cell culture supernate was removed, assayed for human B7-H3/CD276, and measured 346.1 pg/mL



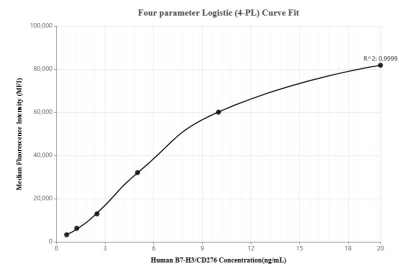
Urine of eight individual healthy human donors was measured. The B7-H3/CD276 concentration of detected samples was determined to be 19.6 ng/mL with a range of 3.0 - 52.0 ng/mL



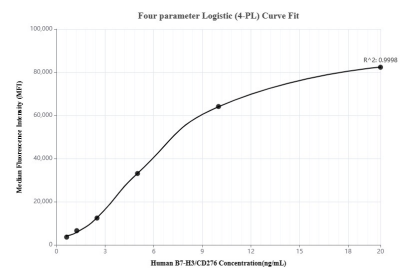
The mean B7-H3/CD276 concentration was determined to be 178.3 ng/mL in A549 cell extract based on a 3.8 mg/mL extract load.



Plasma of sixteen individual healthy human donors was measured. The B7-H3/CD276 concentration of detected samples was determined to be 12.9 ng/mL with a range of 6.4 - 21.2 ng/mL



Cytometric bead array standard curve of MP00248-2, B7-H3/CD276 Recombinant Matched Antibody Pair, PBS Only. Capture antibody: 83152-2-PBS. Detection antibody: 83152-3-PBS. Standard: Eg0075. Range: 0.625-20 ng/mL



Cytometric bead array standard curve of MP00248-3, B7-H3/CD276 Recombinant Matched Antibody Pair, PBS Only. Capture antibody: 83152-2-PBS. Detection antibody: 83152-1-PBS. Standard: Eg0075. Range: 0.625-20 ng/mL