

For Research Use Only

TMEM165 Recombinant antibody

Catalog Number: 83146-1-RR



Basic Information

Catalog Number: 83146-1-RR	GenBank Accession Number: BC003545	Purification Method: Protein A purification
Size: 1000 ug/ml	GeneID (NCBI): 55858	CloneNo.: 230517B1
Source: Rabbit	UNIPROT ID: Q9HC07	Recommended Dilutions: IF/ICC 1:200-1:800
Isotype: IgG	Full Name: transmembrane protein 165	
Immunogen Catalog Number: AG14362	Calculated MW: 324 aa, 35 kDa	

Applications

Tested Applications: IF/ICC, FC (Intra), ELISA	Positive Controls: IF/ICC : HepG2 cells,
Species Specificity: human	

Background Information

Thiopurine methyltransferase or thiopurine S-methyltransferase (TPMT), a member of methyltransferase superfamily, is an enzyme involved in the normal metabolic inactivation of thiopurine drugs such as azathioprine, 6-mercaptopurine and 6-thioguanine. These drugs are generally used as immunosuppressants or cytotoxic drugs and are prescribed for a variety of clinical conditions including leukemia, autoimmune disease and organ transplantation. Defects in the TPMT gene leads to decreased methylation and decreased inactivation of 6MP leading to enhanced bone marrow toxicity which may cause myelosuppression, anemia, bleeding tendency, leukopenia and infection.

Storage

Storage:
Store at -20°C. Stable for one year after shipment.
Storage Buffer:
PBS with 0.02% sodium azide and 50% glycerol pH 7.3.
Aliquoting is unnecessary for -20°C storage

For technical support and original validation data for this product please contact:

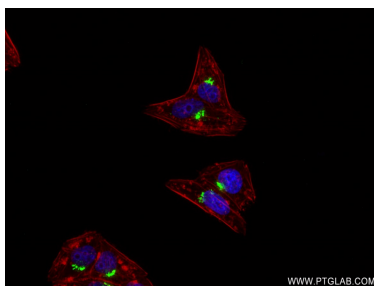
T: 4006900926

E: Proteintech-CN@ptglab.com

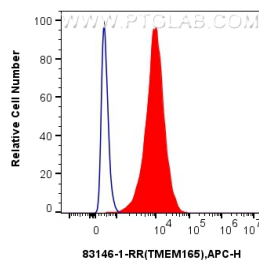
W: ptgcn.com

This product is exclusively available under Proteintech Group brand and is not available to purchase from any other manufacturer.

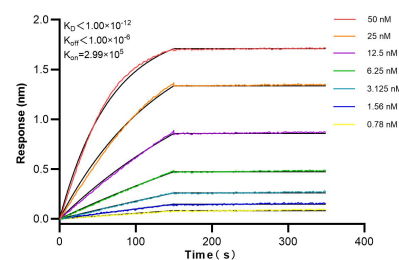
Selected Validation Data



Immunofluorescent analysis of (4% PFA) fixed HepG2 cells using TMEM165 antibody (83146-1-RR, Clone: 230517B1) at dilution of 1:400 and CoraLite@488-Conjugated AffiniPure Goat Anti-Mouse IgG(H+L) (SA00013-1), CL594-Phalloidin (red).



1×10^6 HepG2 cells were intracellularly stained with 0.25 μ g TMEM165 Recombinant antibody (83146-1-RR, Clone:230517B1) and APC-Conjugated AffiniPure Goat Anti-Rabbit IgG(H+L) (red), or 0.25 μ g Rabbit IgG control Rabbit PolyAb (30000-O-AP) (blue). Cells were fixed with 4% PFA and permeabilized with Flow Cytometry Perm Buffer (PF00011-C).



Biolayer interferometry (BLI) kinetic assays of 83146-1-RR against Human TMEM165 were performed. The affinity constant is below 1 pM.