

For Research Use Only

TMEM165 Recombinant antibody, PBS Only (Detector)

Catalog Number: 83146-1-PBS



Basic Information

Catalog Number:

83146-1-PBS

Size:

1mg/ml

Source:

Rabbit

Isotype:

IgG

Immunogen Catalog Number:

AG14362

GenBank Accession Number:

BC003545

GeneID (NCBI):

55858

UNIPROT ID:

Q9HC07

Full Name:

transmembrane protein 165

Calculated MW:

324 aa, 35 kDa

Purification Method:

Protein A purification

CloneNo.:

230517B1

Applications

Tested Applications:

IF/ICC, FC (Intra), Cytometric bead array, Indirect ELISA

Species Specificity:

human

Background Information

Storage

Storage:

Store at -80°C.

The product is shipped with ice packs. Upon receipt, store it immediately at -80°C

Storage Buffer:

PBS Only

For technical support and original validation data for this product please contact:

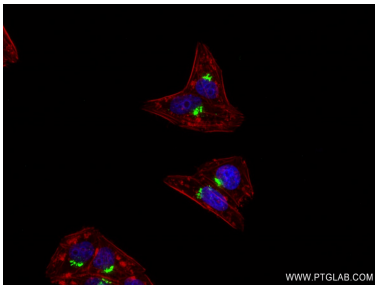
T: 4006900926

E: Proteintech-CN@ptglab.com

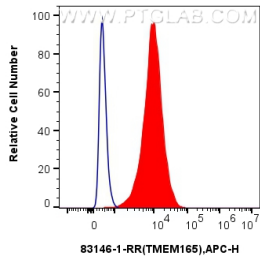
W: ptgcn.com

This product is exclusively available under Proteintech Group brand and is not available to purchase from any other manufacturer.

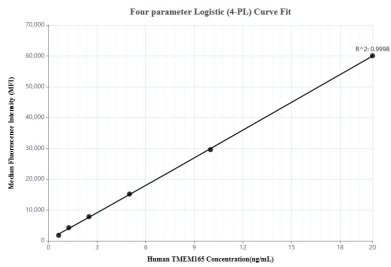
Selected Validation Data



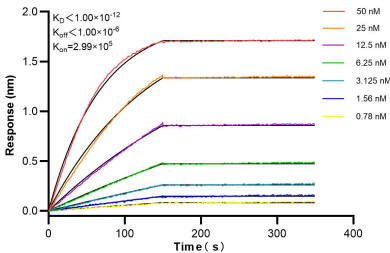
Immunofluorescent analysis of (4% PFA) fixed HepG2 cells using TMEM165 antibody (83146-1-RR, Clone: 230517B1) at dilution of 1:400 and CoraLite®488-Conjugated AffiniPure Goat Anti-Mouse IgG(H+L) (SA00013-1), CL594-Phalloidin (red). This data was developed using the same antibody clone with 83146-1-PBS in a different storage buffer formulation.



1x10⁶ HepG2 cells were intracellularly stained with 0.25 ug TMEM165 Recombinant antibody (83146-1-RR, Clone:230517B1) and APC-Conjugated AffiniPure Goat Anti-Rabbit IgG(H+L)(red), or 0.25 ug Rabbit IgG control Rabbit PolyAb (30000-O-AP) (blue). Cells were fixed with 4% PFA and permeabilized with Flow Cytometry Perm Buffer (PF00011-C). This data was developed using the same antibody clone with 83146-1-PBS in a different storage buffer formulation.



Cytometric bead array standard curve of MP00217-2, TMEM165 Recombinant Matched Antibody Pair, PBS Only. Capture antibody: 83146-2-PBS. Detection antibody: 83146-1-PBS. Standard: Ag14362. Range: 0.625-20 ng/mL



Biolayer interferometry (BLI) kinetic assays of 83146-1-RR against Human TMEM165 were performed. The affinity constant is below 1 pM.