

For Research Use Only

NPT2C Recombinant monoclonal antibody, PBS Only (Capture)

Catalog Number: 83139-5-PBS



Basic Information

Catalog Number:

83139-5-PBS

Source:

Rabbit

Isotype:

IgG

Immunogen Catalog Number:

EG5835

GenBank Accession Number:

NM_001177316.2

GeneID (NCBI):

142680

UNIPROT ID:

Q8N130

Full Name:

solute carrier family 34 (sodium phosphate), member 3

Calculated MW:

63 kDa

Purification Method:

Protein A purification

CloneNo.:

252167D8

Applications

Tested Applications:

Sandwich ELISA, Indirect ELISA

Species Specificity:

human

Background Information

Storage

Storage:

Store at -80°C.

The product is shipped with ice packs. Upon receipt, store it immediately at -80°C

Storage Buffer:

PBS only, pH7.3

For technical support and original validation data for this product please contact:

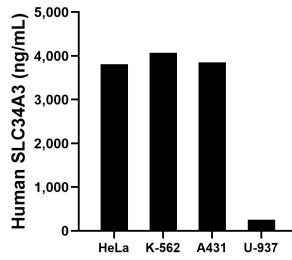
T: 4006900926

E: Proteintech-CN@ptglab.com

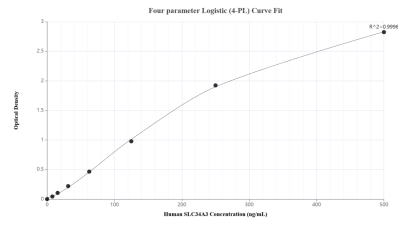
W: ptgcn.com

This product is exclusively available under Proteintech Group brand and is not available to purchase from any other manufacturer.

Selected Validation Data



The mean SLC34A3 concentration was determined to be 3,807.34 ng/mL in HeLa cell extract based on a 1.20 mg/mL extract load, 4,074.78 ng/mL in K-562 cell extract based on a 1.20 mg/mL extract load, 3,855.17 ng/mL in A431 cell extract based on a 1.20 mg/mL extract load and 250.95 ng/mL in U-937 cell extract based on a 2.60 mg/mL extract load.



Sandwich ELISA standard curve of MP02935-1, Human SLC34A3 Recombinant Matched Antibody Pair - PBS only. 83139-5-PBS was coated to a plate as the capture antibody and incubated with serial dilutions of standard Eg5835. 83139-4-PBS was HRP conjugated as the detection antibody. Range: 7.81-500 ng/mL