

For Research Use Only

# NPT2C Recombinant monoclonal antibody, PBS Only (Detector)

Catalog Number: 83139-4-PBS



## Basic Information

<b>Catalog Number:</b> 83139-4-PBS	<b>GenBank Accession Number:</b> NM_001177316.2	<b>Purification Method:</b> Protein A purification
<b>Source:</b> Rabbit	<b>GeneID (NCBI):</b> 142680	<b>CloneNo.:</b> 252167H6
<b>Isotype:</b> IgG	<b>UNIPROT ID:</b> Q8N130	
<b>Immunogen Catalog Number:</b> EG5835	<b>Full Name:</b> solute carrier family 34 (sodium phosphate), member 3	
	<b>Calculated MW:</b> 63 kDa	

## Applications

**Tested Applications:**  
Sandwich ELISA, Indirect ELISA

**Species Specificity:**  
human

## Background Information

### Storage

**Storage:**  
Store at -80°C.  
**The product is shipped with ice packs. Upon receipt, store it immediately at -80°C**

**Storage Buffer:**  
PBS only, pH7.3

For technical support and original validation data for this product please contact:

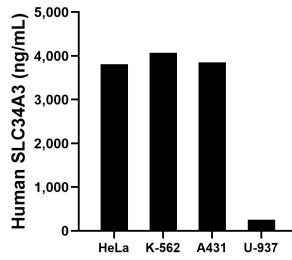
T: 4006900926

E: [Proteintech-CN@ptglab.com](mailto:Proteintech-CN@ptglab.com)

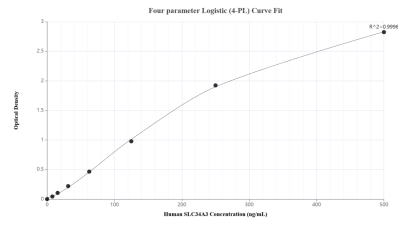
W: [ptgcn.com](http://ptgcn.com)

**This product is exclusively available under Proteintech Group brand and is not available to purchase from any other manufacturer.**

## Selected Validation Data



The mean SLC34A3 concentration was determined to be 3,807.34 ng/mL in HeLa cell extract based on a 1.20 mg/mL extract load, 4,074.78 ng/mL in K-562 cell extract based on a 1.20 mg/mL extract load, 3,855.17 ng/mL in A431 cell extract based on a 1.20 mg/mL extract load and 250.95 ng/mL in U-937 cell extract based on a 2.60 mg/mL extract load.



Sandwich ELISA standard curve of MP02935-1, Human SLC34A3 Recombinant Matched Antibody Pair - PBS only. 83139-5-PBS was coated to a plate as the capture antibody and incubated with serial dilutions of standard Eg5835. 83139-4-PBS was HRP conjugated as the detection antibody. Range: 7.81-500 ng/mL