

For Research Use Only

RNF31 Recombinant antibody, PBS Only (Capture)



Catalog Number: 83137-3-PBS

Basic Information

Catalog Number: 83137-3-PBS	GenBank Accession Number: BC017376	Purification Method: Protein A purification
Size: 1mg/ml	GeneID (NCBI): 55072	CloneNo.: 230446H1
Source: Rabbit	UNIPROT ID: Q96EPO	Affinity: $K_D = 5.82 \times 10^{-10}$
Isotype: IgG	Full Name: ring finger protein 31	$K_{off} = 5.93 \times 10^{-5}$
Immunogen Catalog Number: AG34505	Calculated MW: 1072 aa, 120 kDa	$K_{on} = 1.02 \times 10^5$

Applications

Tested Applications:
IF/ICC, Indirect ELISA, Cytometric bead array

Species Specificity:
Human

Background Information

Storage

Storage:
Store at -80°C.
The product is shipped with ice packs. Upon receipt, store it immediately at -80°C

Storage Buffer:
PBS Only

For technical support and original validation data for this product please contact:

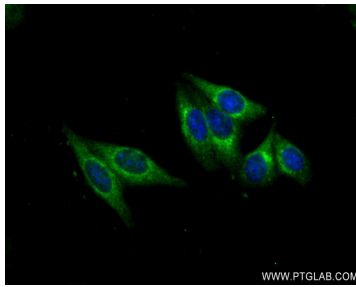
T: 4006900926

E: Proteintech-CN@ptglab.com

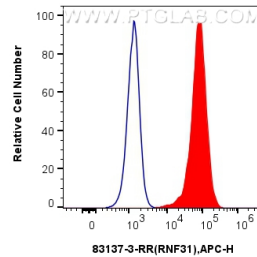
W: ptgcn.com

This product is exclusively available under Proteintech Group brand and is not available to purchase from any other manufacturer.

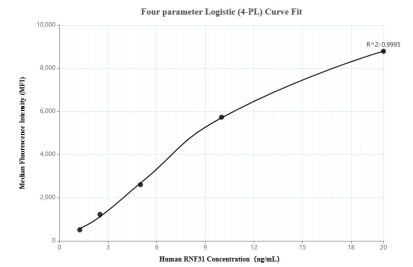
Selected Validation Data



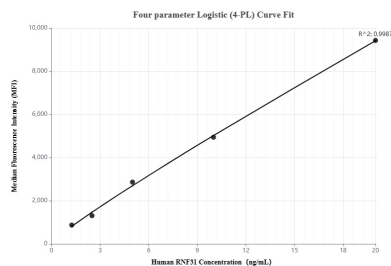
Immunofluorescent analysis of (-20°C Ethanol) fixed HepG2 cells using RNF31 antibody (83137-3-RR, Clone: 230446H1) at dilution of 1:250 and CoraLite®488-Conjugated AffiniPure Goat Anti-Rabbit IgG(H+L) (SA00013-2). This data was developed using the same antibody clone with 83137-3-PBS in a different storage buffer formulation.



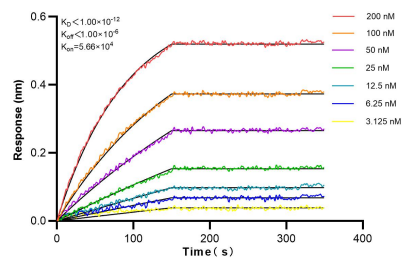
1×10^6 PC-3 cells were intracellularly stained with 0.2 μ g Rnf31 Recombinant Antibody (83137-3-RR, Clone: 230446H1) and APC-Conjugated AffiniPure Goat Anti-Rabbit IgG(H+L)(red), or 0.2 μ g Rabbit IgG control Rabbit PolyAb (30000-0-AP) (blue). Cells were fixed with 4% PFA and permeabilized with Flow Cytometry Perm Buffer (PF00011-C). This data was developed using the same antibody clone with 83137-3-PBS in a different storage buffer formulation.



Cytometric bead array standard curve of MP00285-1, RNF31 Recombinant Matched Antibody Pair - PBS only. Capture antibody: 83137-3-PBS. Detection antibody: 83137-1-PBS. Standard: Ag34505. Range: 1.25-20 ng/mL.



Cytometric bead array standard curve of MP00285-2, RNF31 Recombinant Matched Antibody Pair - PBS only. Capture antibody: 83137-3-PBS. Detection antibody: 83137-2-PBS. Standard: Ag34505. Range: 1.25-20 ng/mL.



Biolayer interferometry (BLI) kinetic assays of 83137-3-RR against Human RNF31 / HOIP were performed. The affinity constant is below 1 pM.