

For Research Use Only

SPTA1 Recombinant antibody, PBS Only (Capture/Detector)

Catalog Number: 83133-4-PBS



Basic Information

Catalog Number:

83133-4-PBS

Size:

1mg/ml

Source:

Rabbit

Isotype:

IgG

GenBank Accession Number:

NM_003126

GeneID (NCBI):

6708

UNIPROT ID:

P02549

Full Name:

spectrin, alpha, erythrocytic 1
(elliptocytosis 2)

Calculated MW:

280 kDa

Purification Method:

Protein A purification

CloneNo.:

230507G1

Applications

Tested Applications:

Cytometric bead array, Sandwich ELISA, Indirect ELISA,
Sample test

Species Specificity:

human

Background Information

Storage

Storage:

Store at -80°C.

The product is shipped with ice packs. Upon receipt, store it immediately at -80°C

Storage Buffer:

PBS Only

For technical support and original validation data for this product please contact:

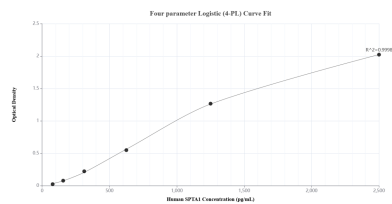
T: 4006900926

E: Proteintech-CN@ptglab.com

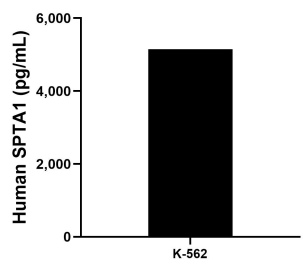
W: ptgcn.com

This product is exclusively available under Proteintech Group brand and is not available to purchase from any other manufacturer.

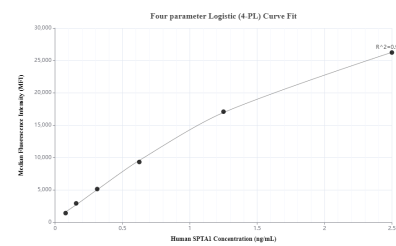
Selected Validation Data



Sandwich ELISA standard curve of MP00280-3, Human SPTA1 Recombinant Matched Antibody Pair - PBS only. 83133-4-PBS was coated to a plate as the capture antibody and incubated with serial dilutions of standard SY01287. 83133-6-PBS was HRP conjugated as the detection antibody. Range: 78.1-2500 pg/mL



The mean SPTA1 concentration was determined to be 5,150.0 pg/mL in K-562 cell extract based on a 2.1 mg/mL extract load.



Cytometric bead array standard curve of MP00280-1, SPTA1 Recombinant Matched Antibody Pair, PBS Only. Capture antibody: 83133-6-PBS. Detection antibody: 83133-4-PBS. Standard: SY01287. Range: 78-2500 pg/mL