

For Research Use Only

MTCO2 Recombinant antibody

Catalog Number: 83132-7-RR

Featured Product



Basic Information

Catalog Number:

83132-7-RR

Size:

1000 ug/ml

Source:

Rabbit

Isotype:

IgG

GenBank Accession Number:

YP_003024029

GeneID (NCBI):

4513

UNIPROT ID:

P00403

Full Name:

cytochrome c oxidase II

Calculated MW:

26 kDa

Observed MW:

23-26 kDa

Purification Method:

Protein A purification

CloneNo.:

230448C9

Recommended Dilutions:

WB 1:5000-1:50000

IP 0.5-4.0 ug for 1.0-3.0 mg of total protein lysate

IHC 1:500-1:2000

IF/ICC 1:200-1:800

Applications

Tested Applications:

WB, IHC, IF/ICC, FC (Intra), IP, ELISA

Species Specificity:

human

Note-IHC: suggested antigen retrieval with TE buffer pH 9.0; (*) Alternatively, antigen retrieval may be performed with citrate buffer pH 6.0

Positive Controls:

WB : HepG2 cells, 143B.TK.P0 cells, 143B cells, HeLa cells, U-251 cells, A549 cells, MDA-MB-231 cells

IP : HeLa cells,

IHC : human ovarian cancer, human stomach cancer tissue

IF/ICC : HepG2 cells,

Background Information

MTCO2, also named as COII, COXII, and COX2, belongs to the cytochrome c oxidase subunit 2 family. It is the component of the respiratory chain that catalyzes the reduction of oxygen to water. Subunits 1-3 form the functional core of the enzyme complex. Subunit 2 transfers the electrons from cytochrome c via its binuclear copper A center to the bimetallic center of the catalytic subunit 1. Defects in COX2 are a cause of mitochondrial complex IV deficiency (MT-C4D).

Storage

Storage:

Store at -20°C. Stable for one year after shipment.

Storage Buffer:

PBS with 0.02% sodium azide and 50% glycerol pH 7.3.

Aliquoting is unnecessary for -20°C storage

For technical support and original validation data for this product please contact:

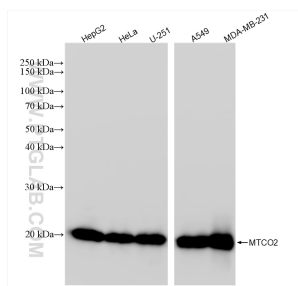
T: 4006900926

E: Proteintech-CN@ptglab.com

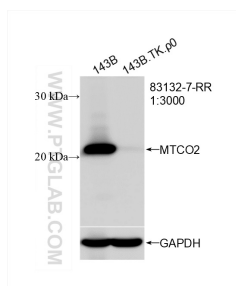
W: ptgcn.com

This product is exclusively available under Proteintech Group brand and is not available to purchase from any other manufacturer.

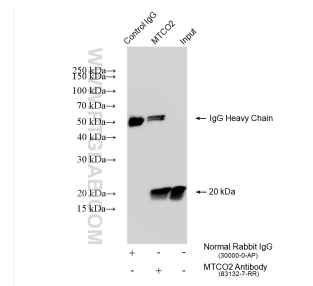
Selected Validation Data



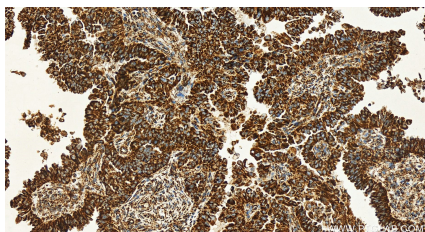
Various lysates were subjected to SDS PAGE followed by western blot with 83132-7-RR (MTCO2 antibody) at dilution of 1:10000 incubated at room temperature for 1.5 hours.



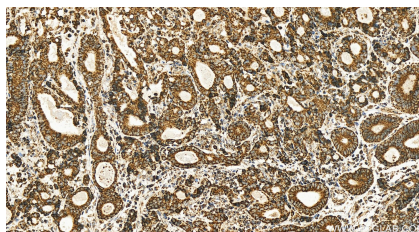
WB result of MTCO2 antibody (MTCO2; 1:3000; incubated at room temperature for 1.5 hours) with 143B and 143B.TK.ρ0 cell. 143B is wild-type cell line, 143B.TK.ρ0 is mtDNA deletion cell line.



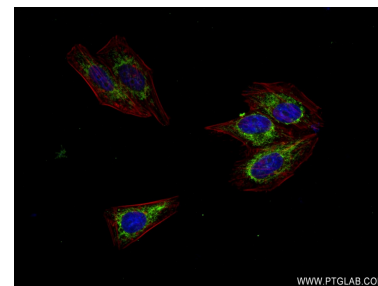
IP result of anti-MTCO2 (IP:83132-7-RR, 4ug; Detection:83132-7-RR 1:3000) with HeLa cells lysate 1750 ug.



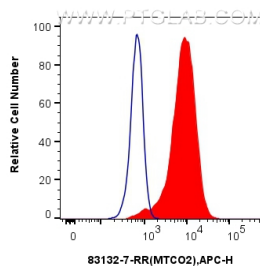
Immunohistochemical analysis of paraffin-embedded human ovarian cancer slide using 83132-7-RR (MTCO2 antibody) at dilution of 1:1000 (under 20x lens). Heat mediated antigen retrieval with Tris-EDTA buffer (pH 9.0).



Immunohistochemical analysis of paraffin-embedded human stomach cancer tissue slide using 83132-7-RR (MTCO2 antibody) at dilution of 1:500 (under 20x lens). Heat mediated antigen retrieval with Tris-EDTA buffer (pH 9.0).



Immunofluorescent analysis of (4% PFA) fixed HepG2 cells using MTCO2 antibody (83132-7-RR, Clone: 230448C9) at dilution of 1:400 and CoraLite@488-Conjugated AffiniPure Goat Anti-Mouse IgG(H+L) (SA00013-1), CL594-Phalloidin (red).



1x10⁶ HeLa cells were intracellularly stained with 0.25 ug Anti-Human MTCO2 (83132-7-RR, Clone:230448C9) and APC-Conjugated AffiniPure Goat Anti-Rabbit IgG(H+L)(red), or 0.25 ug Rabbit IgG control Rabbit PolyAb (30000-O-AP) (blue). Cells were fixed with 4% PFA and permeabilized with Flow Cytometry Perm Buffer (PF00011-C).