

For Research Use Only

# WHSC1L1 Recombinant antibody, PBS Only (Detector)

Catalog Number: 83116-5-PBS



## Basic Information

Catalog Number:

83116-5-PBS

Size:

1mg/ml

Source:

Rabbit

Isotype:

IgG

Immunogen Catalog Number:

AG1894

GenBank Accession Number:

BC012059

GeneID (NCBI):

54904

UNIPROT ID:

Q9BZ95

Full Name:

Wolf-Hirschhorn syndrome candidate

1-like 1

Calculated MW:

1437 aa, 162 kDa

Purification Method:

Protein A purification

CloneNo.:

230499C4

## Applications

Tested Applications:

Cytometric bead array, Sandwich ELISA, Indirect ELISA, Sample test

Species Specificity:

human

## Background Information

### Storage

Storage:

Store at -80°C.

The product is shipped with ice packs. Upon receipt, store it immediately at -80°C

Storage Buffer:

PBS Only

For technical support and original validation data for this product please contact:

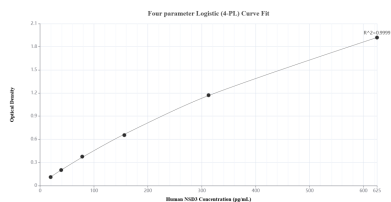
T: 4006900926

E: [Proteintech-CN@ptglab.com](mailto:Proteintech-CN@ptglab.com)

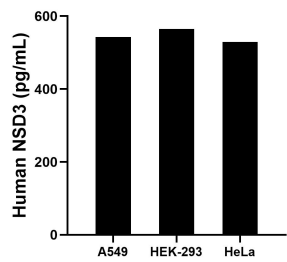
W: [ptgcn.com](http://ptgcn.com)

This product is exclusively available under Proteintech Group brand and is not available to purchase from any other manufacturer.

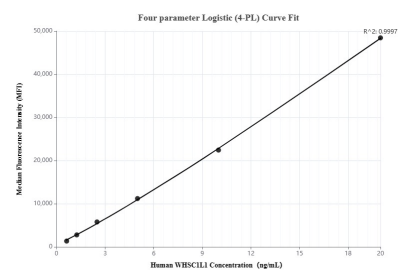
## Selected Validation Data



Sandwich ELISA standard curve of MP00189-4, Human NSD3 Recombinant Matched Antibody Pair - PBS only. 83116-2-PBS was coated to a plate as the capture antibody and incubated with serial dilutions of standard Ag1894. 83116-5-PBS was HRP conjugated as the detection antibody. Range: 19.5-625 pg/mL.



The mean NSD3 concentration was determined to be 542.5 pg/mL in A549 cell extract based on a 1.0 mg/mL extract load, 565.1 pg/mL in HEK-293 cell extract based on a 1.2 mg/mL extract load and 529.6 pg/mL in HeLa cell extract based on a 1.5 mg/mL extract load.



Cytometric bead array standard curve of MP00189-3, WHSC1L1 Recombinant Matched Antibody Pair, PBS Only. Capture antibody: 83116-3-PBS. Detection antibody: 83116-5-PBS. Standard: Ag1894. Range: 0.625-20 ng/mL.