

For Research Use Only

# NSD3 Recombinant antibody, PBS Only (Capture)

Catalog Number: 83116-2-PBS



## Basic Information

Catalog Number: 83116-2-PBS	GenBank Accession Number: BC012059	Purification Method: Protein A purification
Size: 1mg/ml	GeneID (NCBI): 54904	CloneNo.: 230499C2
Source: Rabbit	UNIPROT ID: Q9BZ95	
Isotype: IgG	Full Name: Wolf-Hirschhorn syndrome candidate 1-like 1	
Immunogen Catalog Number: AG1894	Calculated MW: 1437 aa, 162 kDa	
	Observed MW: 160-170 kDa, 68-72 kDa	

## Applications

**Tested Applications:**  
WB, IHC, FC (Intra), Cytometric bead array, Sandwich ELISA, Indirect ELISA, Sample test

**Species Specificity:**  
human

## Background Information

WHSC1L1, also named as NSD3 and DC28, belongs to the histone-lysine methyltransferase family and SET2 subfamily. It is histone methyltransferase. WHSC1L1 is a potentially transforming oncogenes based on the number of altered phenotypes expressed by the cells. It contains a PWWP-domain that is a methyl-lysine recognition motif involved in histone code modification and epigenetic regulation of gene expression. Knockdown of WHSC1L1 in 8p11-12-amplified breast cancer cells resulted in profound loss of growth and survival of these cells. (PMID: 20940404). This antibody recognize the long isoform (160-170 kDa) and short isoform (68-72 kDa).

## Storage

**Storage:**  
Store at -80°C.  
**The product is shipped with ice packs. Upon receipt, store it immediately at -80°C**

**Storage Buffer:**  
PBS Only

For technical support and original validation data for this product please contact:

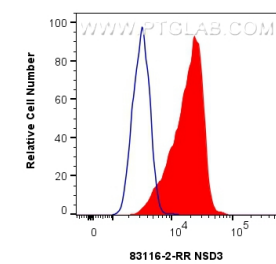
T: 4006900926

E: Proteintech-CN@ptglab.com

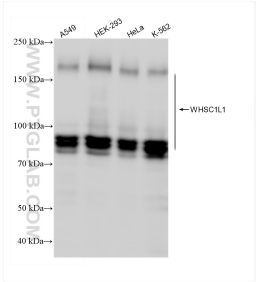
W: ptgcn.com

**This product is exclusively available under Proteintech Group brand and is not available to purchase from any other manufacturer.**

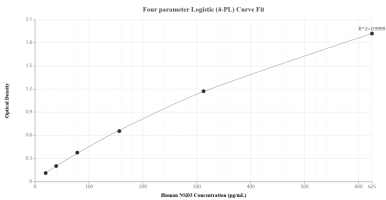
Selected Validation Data



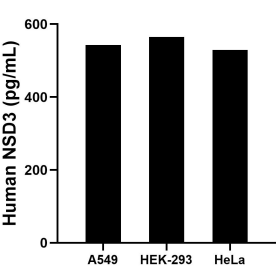
1x10<sup>6</sup> HeLa cells were intracellularly stained with 0.4 ug NSD3 Recombinant antibody (83116-2-RR, Clone:230499C2) and CoraLite®488-Conjugated AffiniPure Goat Anti-Rabbit IgG(H+L) (SA00013-2) (red), or 0.4 ug Isotype Control (blue). Cells were fixed and permeabilized with Transcription Factor Staining Buffer Kit (PF00011). This data was developed using the same antibody clone with 83116-2-PBS in a different storage buffer formulation.



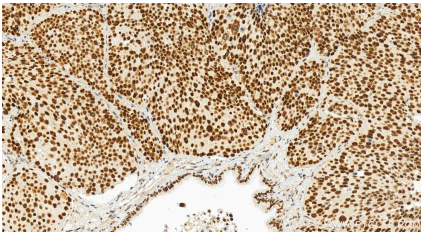
Various lysates were subjected to SDS PAGE followed by western blot with 83116-2-RR (WHSC1L1 antibody) at dilution of 1:10000 incubated at room temperature for 1.5 hours. This data was developed using the same antibody clone with 83116-2-PBS in a different storage buffer formulation.



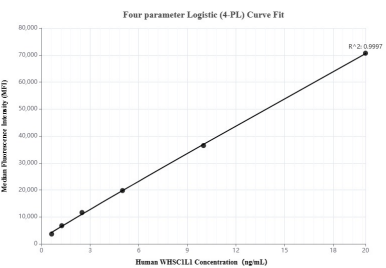
Sandwich ELISA standard curve of MP00189-4, Human NSD3 Recombinant Matched Antibody Pair - PBS only. 83116-2-PBS was coated to a plate as the capture antibody and incubated with serial dilutions of standard Ag1894. 83116-5-PBS was HRP conjugated as the detection antibody. Range: 19.5-625 pg/mL



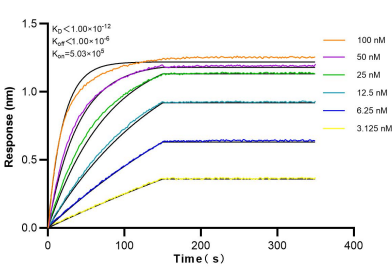
The mean NSD3 concentration was determined to be 542.5 pg/mL in A549 cell extract based on a 1.0 mg/mL extract load, 565.1 pg/mL in HEK-293 cell extract based on a 1.2 mg/mL extract load and 529.6 pg/mL in HeLa cell extract based on a 1.5 mg/mL extract load.



Immunohistochemical analysis of paraffin-embedded human lung squamous cell carcinoma tissue slide using 83116-2-RR (NSD3 antibody) at dilution of 1:400 (under 20x lens). Heat mediated antigen retrieval with Tris-EDTA buffer (pH 9.0). This data was developed using the same antibody clone with 83116-2-PBS in a different storage buffer formulation.



Cytometric bead array standard curve of MP00189-2, WHSC1L1 Recombinant Matched Antibody Pair, PBS Only. Capture antibody: 83116-2-PBS. Detection antibody: 83116-4-PBS. Standard: Ag1894. Range: 0.625-20 ng/mL.



Biolayer interferometry (BLI) kinetic assays of 83116-2-RR against Human NSD3 were performed. The affinity constant is below 1 pM.