

For Research Use Only

# NSD3 Recombinant antibody, PBS Only

Catalog Number: 83116-1-PBS



## Basic Information

Catalog Number: 83116-1-PBS	GenBank Accession Number: BC012059	Purification Method: Protein A purification
Size: 1mg/ml	GeneID (NCBI): 54904	CloneNo.: 230499C5
Source: Rabbit	UNIPROT ID: Q9BZ95	
Isotype: IgG	Full Name: Wolf-Hirschhorn syndrome candidate 1-like 1	
Immunogen Catalog Number: AG1894	Calculated MW: 1437 aa, 162 kDa	

## Applications

Tested Applications:  
IHC, IF/ICC, FC (Intra), Indirect ELISA

Species Specificity:  
human

## Background Information

WHSC1L1, also named as NSD3 and DC28, belongs to the histone-lysine methyltransferase family and SET2 subfamily. It is histone methyltransferase. WHSC1L1 is a potentially transforming oncogenes based on the number of altered phenotypes expressed by the cells. It contains a PWWP-domain that is a methyl-lysine recognition motif involved in histone code modification and epigenetic regulation of gene expression. Knockdown of WHSC1L1 in 8p11-12-amplified breast cancer cells resulted in profound loss of growth and survival of these cells. (PMID: 20940404).

## Storage

Storage:  
Store at -80°C.  
**The product is shipped with ice packs. Upon receipt, store it immediately at -80°C**

Storage Buffer:  
PBS Only

For technical support and original validation data for this product please contact:

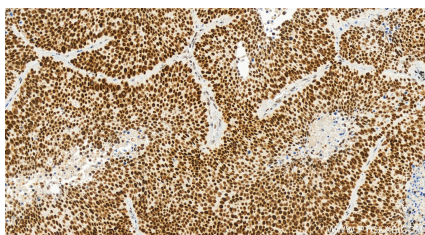
T: 4006900926

E: Proteintech-CN@ptglab.com

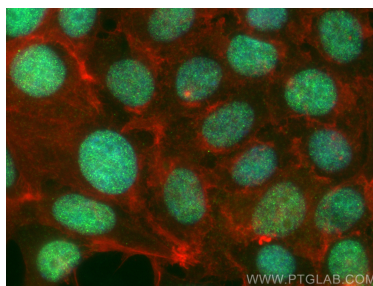
W: ptgcn.com

**This product is exclusively available under Proteintech Group brand and is not available to purchase from any other manufacturer.**

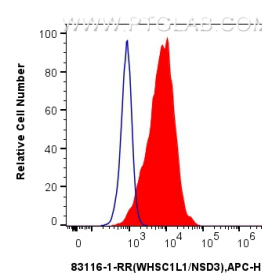
## Selected Validation Data



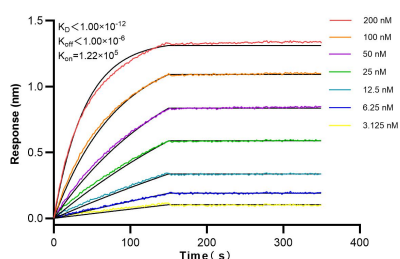
Immunohistochemical analysis of paraffin-embedded human lung squamous cell carcinoma tissue slide using 83116-1-RR (NSD3 antibody) at dilution of 1:400 (under 20x lens). Heat mediated antigen retrieval with Tris-EDTA buffer (pH 9.0). This data was developed using the same antibody clone with 83116-1-PBS in a different storage buffer formulation.



Immunofluorescent analysis of (4% PFA) fixed MCF-7 cells using NSD3 antibody (83116-1-RR, Clone: 230499C5) at dilution of 1:400 and Multi-rAb CoraLite® Plus 488-Goat Anti-Rabbit Recombinant Secondary Antibody (H+L) (RGAR002), CL594-phalloidin (red). This data was developed using the same antibody clone with 83116-1-PBS in a different storage buffer formulation.



1x10<sup>6</sup> HeLa cells were intracellularly stained with 0.25 ug Anti-Human NSD3 (83116-1-RR, Clone:230499C5) and APC-Conjugated AffiniPure Goat Anti-Rabbit IgG(H+L)(red), or 0.25 ug Rabbit IgG control Rabbit PolyAb (30000-O-AP) (blue). Cells were fixed and permeabilized with True-Nuclear Transcription Factor Buffer Set. This data was developed using the same antibody clone with 83116-1-PBS in a different storage buffer formulation.



Bioluminescence resonance energy transfer (BLI) kinetic assays of 83116-1-RR against Human NSD3 were performed. The affinity constant is below 1 pM.