

For Research Use Only

CELSR2 Recombinant antibody

Catalog Number: 83115-1-RR



Basic Information

Catalog Number:

83115-1-RR

Concentration:

1000 ug/ml

Source:

Rabbit

Isotype:

IgG

GenBank Accession Number:

NM_001408

GeneID (NCBI):

1952

UNIPROT ID:

Q9HCU4

Full Name:

cadherin, EGF LAG seven-pass G-type receptor 2 (flamingo homolog, Drosophila)

Calculated MW:

318 kDa

Purification Method:

Protein A purification

CloneNo.:

230319H5

Recommended Dilutions:

IF/ICC 1:125-1:500

Applications

Tested Applications:

IF/ICC, FC (Intra), ELISA

Species Specificity:

human

Positive Controls:

IF/ICC : SH-SY5Y cells,

Background Information

CELSR2, also named CDHF10, EGFL2, KIAA0279, and MEGF3, belongs to the G-protein coupled receptor 2 family and LN-TM7 subfamily. It is a receptor that may be important in cell/cell signaling during nervous system formation.

Storage

Storage:

Store at -20°C. Stable for one year after shipment.

Storage Buffer:

PBS with 0.02% sodium azide and 50% glycerol, pH7.3

Aliquoting is unnecessary for -20°C storage

For technical support and original validation data for this product please contact:

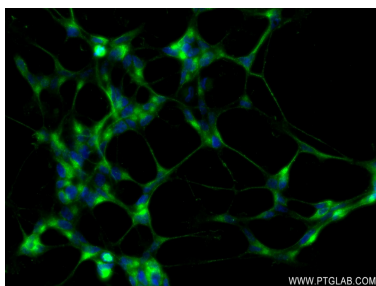
T: 4006900926

E: Proteintech-CN@ptglab.com

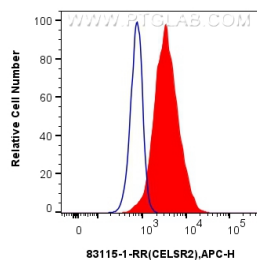
W: ptgcn.com

This product is exclusively available under Proteintech Group brand and is not available to purchase from any other manufacturer.

Selected Validation Data



Immunofluorescent analysis of (4% PFA) fixed SH-SY5Y cells using CELSR2 antibody (83115-1-RR, Clone: 230319H5) at dilution of 1:250 and CoraLite®488-Conjugated AffiniPure Goat Anti-Rabbit IgG(H+L) (SA00013-2).



1x10⁶ HeLa cells were intracellularly stained with 0.25 ug CELSR2 Recombinant antibody (83115-1-RR, Clone:230319H5) and APC-Conjugated AffiniPure Goat Anti-Rabbit IgG(H+L)(red), or 0.25 ug Rabbit IgG control Rabbit PolyAb (30000-0-AP) (blue). Cells were fixed with 4% PFA and permeabilized with Flow Cytometry Perm Buffer (PF00011-C).