

For Research Use Only

MMP1 Recombinant antibody, PBS Only (Capture)

Catalog Number: 83114-4-PBS



Basic Information

Catalog Number:

83114-4-PBS

Concentration:

1000 µg/ml

Source:

Rabbit

Isotype:

IgG

Immunogen Catalog Number:

EG0527

GenBank Accession Number:

BC013875

GeneID (NCBI):

4312

UNIPROT ID:

P03956

Full Name:

matrix metalloproteinase 1
(interstitial collagenase)

Calculated MW:

54 kDa

Purification Method:

Protein A purification

CloneNo.:

230343C12

Applications

Tested Applications:

Cytometric bead array, Sandwich ELISA, Indirect ELISA,
Sample test

Species Specificity:

human

Background Information

Storage

Storage:

Store at -80°C.

The product is shipped with ice packs. Upon receipt, store it immediately at -80°C

Storage Buffer:

PBS only, pH7.3

For technical support and original validation data for this product please contact:

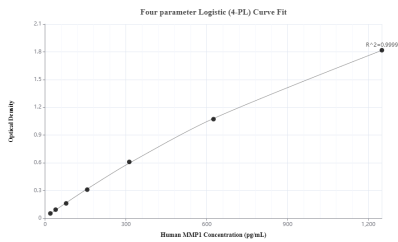
T: 4006900926

E: Proteintech-CN@ptglab.com

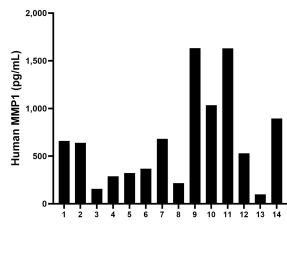
W: ptgcn.com

This product is exclusively available under Proteintech Group brand and is not available to purchase from any other manufacturer.

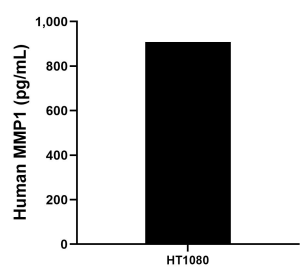
Selected Validation Data



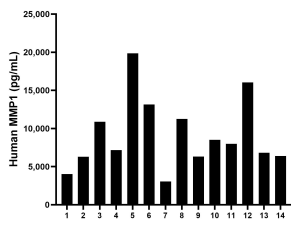
Sandwich ELISA standard curve of MP00290-1, MMP1 Recombinant Matched Antibody Pair, PBS Only. 83114-4-PBS was coated to a plate as the capture antibody and incubated with serial dilutions of standard Eg0527. 83114-3-PBS was HRP conjugated as the detection antibody. Range: 19.5-1250 pg/mL.



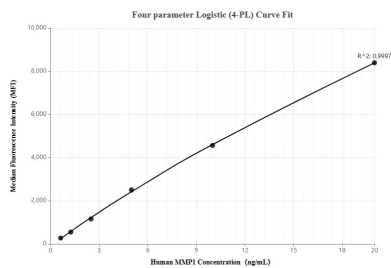
Plasma of fourteen individual healthy human donors were measured. The human MMP1 concentration of detected samples was determined to be 653.4 pg/mL with a range of 99.3 - 1,631.8 pg/mL.



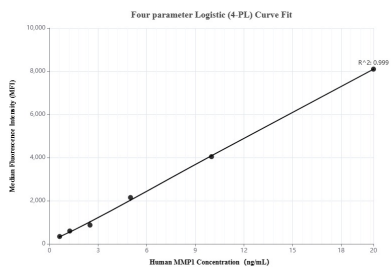
HT1080 were cultured in DMEM supplemented with 10% fetal bovine serum, 2.5 mM L-glutamine, 100 U/mL penicillin, and 100 μ g/mL streptomycin sulfate. An aliquot of the cell culture supernate was removed, assayed for human MMP1, and measured 907.5 pg/mL.



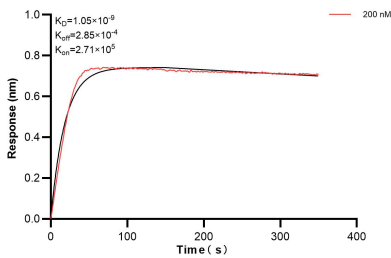
Serum of fourteen individual healthy human donors were measured. The human MMP1 concentration of detected samples was determined to be 9,124.3 pg/mL with a range of 3,045.5 - 19,864.3 pg/mL.



Cytometric bead array standard curve of MP00290-1, MMP1 Recombinant Matched Antibody Pair, PBS Only. Capture antibody: 83114-4-PBS. Detection antibody: 83114-3-PBS. Standard: Eg0527. Range: 0.625-20 ng/mL.



Cytometric bead array standard curve of MP00290-2, MMP1 Recombinant Matched Antibody Pair, PBS Only. Capture antibody: 83114-4-PBS. Detection antibody: 83114-5-PBS. Standard: Eg0527. Range: 0.625-20 ng/mL.



Biolayer interferometry (BLI) kinetic assay of 83114-4-PBS against Human MMP1 was performed. The affinity constant is 1.05 nM.