

For Research Use Only

NEDD4 Recombinant antibody, PBS Only (Capture/Detector)

Catalog Number: 83112-2-PBS



Basic Information

Catalog Number:

83112-2-PBS

Size:

1mg/ml

Source:

Rabbit

Isotype:

IgG

Immunogen Catalog Number:

AG16291

GenBank Accession Number:

BC152452

GeneID (NCBI):

4734

UNIPROT ID:

P46934

Full Name:

neural precursor cell expressed,
developmentally down-regulated 4

Calculated MW:

1319 aa, 149 kDa

Purification Method:

Protein A purification

CloneNo.:

230478A1

Applications

Tested Applications:

Cytometric bead array, Sandwich ELISA, Indirect ELISA,
Sample test

Species Specificity:

human

Background Information

Storage

Storage:

Store at -80°C.

The product is shipped with ice packs. Upon receipt, store it immediately at -80°C

Storage Buffer:

PBS Only

For technical support and original validation data for this product please contact:

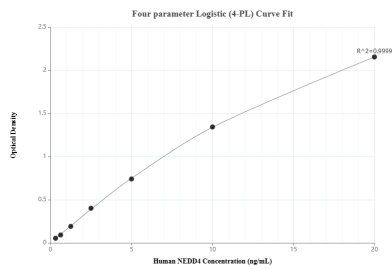
T: 4006900926

E: Proteintech-CN@ptglab.com

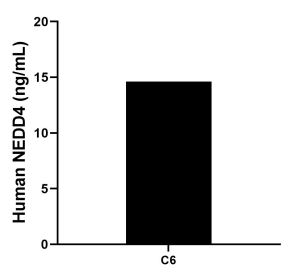
W: ptgcn.com

This product is exclusively available under Proteintech Group brand and is not available to purchase from any other manufacturer.

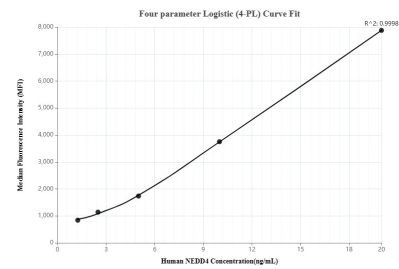
Selected Validation Data



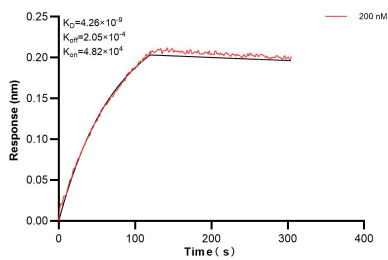
Sandwich ELISA standard curve of MP00234-2, Human NEDD4 Recombinant Matched Antibody Pair - PBS only. 83112-5-PBS was coated to a plate as the capture antibody and incubated with serial dilutions of standard Ag16291. 83112-2-PBS was HRP conjugated as the detection antibody. Range: 0.313-20 ng/mL



The mean NEDD4 concentration was determined to be 14.63 ng/mL in C6 cell extract based on a 2.0 mg/mL extract load.



Cytometric bead array standard curve of MP00234-1, NEDD4 Recombinant Matched Antibody Pair, PBS Only. Capture antibody: 83112-2-PBS. Detection antibody: 83112-4-PBS. Standard: Ag16291. Range: 1.25-20 ng/mL



Biolayer interferometry (BLI) kinetic assay of 83112-2-PBS against Human NEDD4 was performed. The affinity constant is 4.26 nM.