

For Research Use Only

p300 Recombinant antibody, PBS Only

Catalog Number: 83078-5-PBS



Basic Information

Catalog Number:

83078-5-PBS

Size:

1 mg/ml

Source:

Rabbit

Isotype:

IgG

GenBank Accession Number:

NM_001429

GeneID (NCBI):

2033

UNIPROT ID:

Q09472

Full Name:

E1A binding protein p300

Calculated MW:

264 kDa

Purification Method:

Protein A purification

CloneNo.:

230369D12

Applications

Tested Applications:

IF/ICC, FC (Intra), IP, Indirect ELISA

Species Specificity:

human

Background Information

Storage

Storage:

Store at -80°C.

The product is shipped with ice packs. Upon receipt, store it immediately at -80°C

Storage Buffer:

PBS Only

For technical support and original validation data for this product please contact:

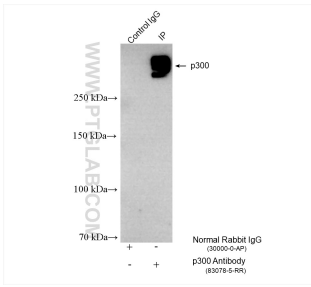
T: 4006900926

E: Proteintech-CN@ptglab.com

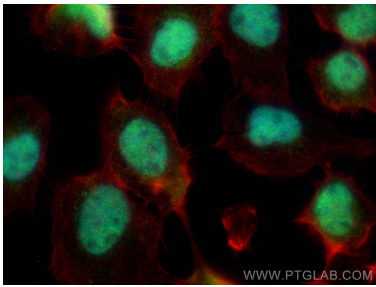
W: ptgcn.com

This product is exclusively available under Proteintech Group brand and is not available to purchase from any other manufacturer.

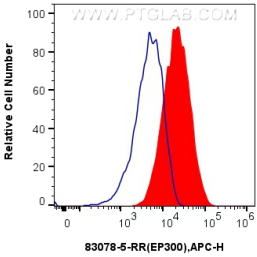
Selected Validation Data



IP result of anti-p300 (IP:83078-5-RR, 4ug; Detection:83078-5-RR 1:1000) with HeLa cells lysate 1050 ug. This data was developed using the same antibody clone with 83078-5-PBS in a different storage buffer formulation.



Immunofluorescent analysis of (4% PFA) fixed A431 cells using p300 antibody (83078-5-RR, Clone: 230369D12) at dilution of 1:1000 and CoraLite®488-Conjugated AffiniPure Goat Anti-Rabbit IgG(H+L) (SA00013-2), CL594-phalloidin (red). This data was developed using the same antibody clone with 83078-5-PBS in a different storage buffer formulation.



1x10⁶ THP-1 cells were intracellularly stained with 0.25 ug Anti-Human EP300 (83078-5-RR, Clone:230369D12) and APC-Conjugated AffiniPure Goat Anti-Rabbit IgG(H+L)(red), or 0.25 ug Rabbit IgG control Rabbit PolyAb (30000-0-AP) (blue). Cells were fixed and permeabilized with True-Nuclear Transcription Factor Buffer Set. This data was developed using the same antibody clone with 83078-5-PBS in a different storage buffer formulation.