

For Research Use Only

SLC4A9 Recombinant antibody, PBS Only (Capture/Detector)



Catalog Number: 83076-3-PBS

Basic Information

Catalog Number:

83076-3-PBS

Size:

1mg/ml

Source:

Rabbit

Isotype:

IgG

Immunogen Catalog Number:

AG34492

GenBank Accession Number:

NM_001258428

GeneID (NCBI):

83697

UNIPROT ID:

Q96Q91

Full Name:

solute carrier family 4, sodium bicarbonate cotransporter, member 9

Calculated MW:

983 aa, 108 kDa

Purification Method:

Protein A purification

CloneNo.:

230419H5

Applications

Tested Applications:

Indirect ELISA, Cytometric bead array

Species Specificity:

Human

Background Information

Storage

Storage:

Store at -80°C.

The product is shipped with ice packs. Upon receipt, store it immediately at -80°C

Storage Buffer:

100% PBS pH 7.3

For technical support and original validation data for this product please contact:

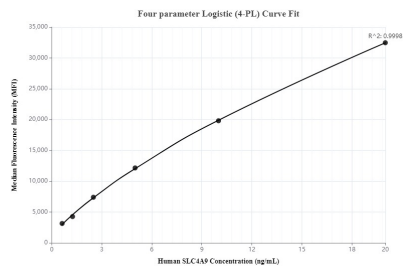
T: 4006900926

E: Proteintech-CN@ptglab.com

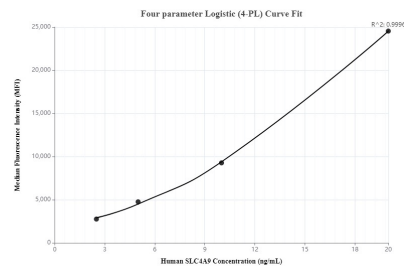
W: ptgcn.com

This product is exclusively available under Proteintech Group brand and is not available to purchase from any other manufacturer.

Selected Validation Data



Cytometric bead array standard curve ofMP00073-1, SLC4A9 Recombinant Matched Antibody Pair, PBS Only. Capture antibody: 83076-2-PBS. Detection antibody: 83076-3-PBS. Standard: Ag34492. Range: 0.625-20 ng/mL



Cytometric bead array standard curve ofMP00073-2, SLC4A9 Recombinant Matched Antibody Pair, PBS Only. Capture antibody: 83076-3-PBS. Detection antibody: 83076-1-PBS. Standard: Ag34492. Range: 2.5-20 ng/mL