

For Research Use Only

LCMT2 Recombinant antibody, PBS Only (Detector)



Catalog Number: 83073-2-PBS

Basic Information

Catalog Number: 83073-2-PBS	GenBank Accession Number: BC015949	Purification Method: Protein A purification
Size: 1mg/ml	GeneID (NCBI): 9836	CloneNo.: 230405H8
Source: Rabbit	UNIPROT ID: O60294	
Isotype: IgG	Full Name: leucine carboxyl methyltransferase 2	
Immunogen Catalog Number: AG11145	Calculated MW: aa, 76 kDa	

Applications

Tested Applications:
Cytometric bead array, Indirect ELISA, IF/ICC

Species Specificity:
human

Background Information

Storage

Storage:
Store at -80°C.
The product is shipped with ice packs. Upon receipt, store it immediately at -80°C

Storage Buffer:
100% PBS pH 7.3

For technical support and original validation data for this product please contact:

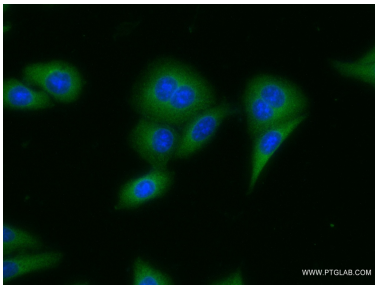
T: 4006900926

E: Proteintech-CN@ptglab.com

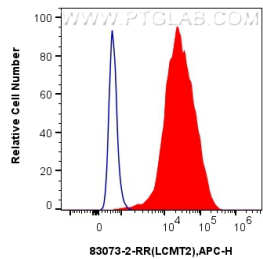
W: ptgcn.com

This product is exclusively available under Proteintech Group brand and is not available to purchase from any other manufacturer.

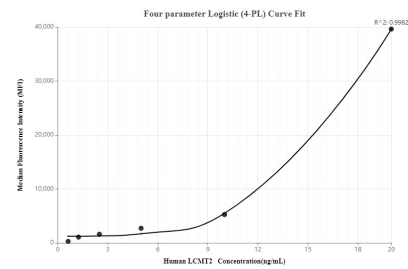
Selected Validation Data



Immunofluorescent analysis of (-20°C Ethanol) fixed HepG2 cells using LCMT2 antibody (83073-2-RR, Clone: 230405H8) at dilution of 1:200 and CoraLite®488-Conjugated AffiniPure Goat Anti-Rabbit IgG(H+L) (SA00013-2). This data was developed using the same antibody clone with 83073-2-PBS in a different storage buffer formulation.



1x10⁶ HeLa cells were intracellularly stained with 0.25 ug LCMT2 Recombinant antibody (83073-2-RR, Clone:230405H8) and APC-Conjugated AffiniPure Goat Anti-Rabbit IgG(H+L)(red), or 0.25 ug Isotype Control (blue). Cells were fixed with 4% PFA and permeabilized with Flow Cytometry Perm Buffer (PF00011-C). This data was developed using the same antibody clone with 83073-2-PBS in a different storage buffer formulation.



Cytometric bead array standard curve of MP00060-1, LCMT2 Recombinant Matched Antibody Pair, PBS Only. Capture antibody: 83073-1-PBS. Detection antibody: 83073-2-PBS. Standard: Ag11145. Range: 0.625-20 ng/mL.