

For Research Use Only

# LCMT2 Recombinant antibody, PBS Only (Capture)



Catalog Number: 83073-1-PBS

## Basic Information

|                                      |  |  |
|--------------------------------------|--|--|
| Catalog Number:<br>83073-1-PBS       | GenBank Accession Number:<br>BC015949              | Purification Method:<br>Protein A purification |
| Size:<br>1mg/ml                      | GeneID (NCBI):<br>9836                             | CloneNo.:<br>230405D2                          |
| Source:<br>Rabbit                    | UNIPROT ID:<br>O60294                              |  |
| Isotype:<br>IgG                      | Full Name:<br>leucine carboxyl methyltransferase 2 |  |
| Immunogen Catalog Number:<br>AG11145 | Calculated MW:<br>aa, 76 kDa                       |  |

## Applications

**Tested Applications:**  
Indirect ELISA, Cytometric bead array

**Species Specificity:**  
Human

## Background Information

### Storage

**Storage:**  
Store at -80°C.  
**The product is shipped with ice packs. Upon receipt, store it immediately at -80°C**

**Storage Buffer:**  
100% PBS pH 7.3

For technical support and original validation data for this product please contact:

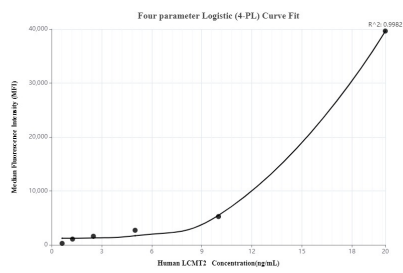
T: 4006900926

E: [Proteintech-CN@ptglab.com](mailto:Proteintech-CN@ptglab.com)

W: [ptgcn.com](http://ptgcn.com)

**This product is exclusively available under Proteintech Group brand and is not available to purchase from any other manufacturer.**

## Selected Validation Data



Cytometric bead array standard curve of MP00060-1, LCMT2 Recombinant Matched Antibody Pair, PBS Only. Capture antibody: 83073-1-PBS. Detection antibody: 83073-2-PBS. Standard: Ag11145. Range: 0.625-20 ng/mL