

For Research Use Only

SLC7A10 Recombinant antibody, PBS Only (Detector)



Catalog Number: 83072-2-PBS

Basic Information

Catalog Number: 83072-2-PBS	GenBank Accession Number: BC035627	Purification Method: Protein A purification
Size: 1mg/ml	GeneID (NCBI): 56301	CloneNo.: 230400C7
Source: Rabbit	UNIPROT ID: Q9NS82	
Isotype: IgG	Full Name: solute carrier family 7, (neutral amino acid transporter, y+ system) member 10	
Immunogen Catalog Number: AG34628	Calculated MW: 57 kDa	

Applications

Tested Applications:
Indirect ELISA, Cytometric bead array

Species Specificity:
Human

Background Information

Storage

Storage:
Store at -80°C.
The product is shipped with ice packs. Upon receipt, store it immediately at -80°C

Storage Buffer:
100% PBS pH 7.3

For technical support and original validation data for this product please contact:

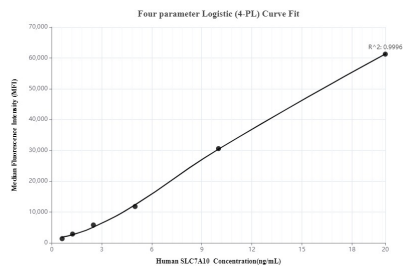
T: 4006900926

E: Proteintech-CN@ptglab.com

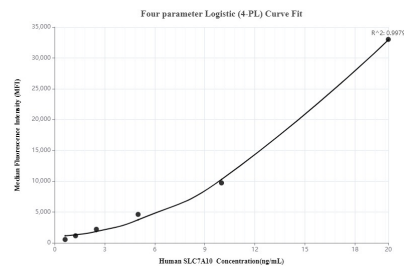
W: ptgcn.com

This product is exclusively available under Proteintech Group brand and is not available to purchase from any other manufacturer.

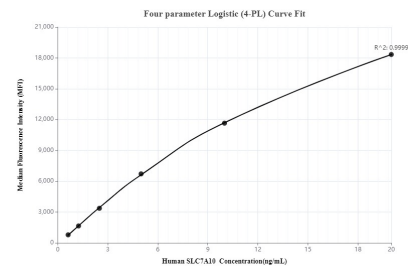
Selected Validation Data



Cytometric bead array standard curve ofMP00053-1, SLC7A10 Recombinant Matched Antibody Pair, PBS Only. Capture antibody: 83072-3-PBS. Detection antibody: 83072-2-PBS. Standard: Ag34628. Range: 0.625-20 ng/mL



Cytometric bead array standard curve ofMP00053-2, SLC7A10 Recombinant Matched Antibody Pair, PBS Only. Capture antibody: 83072-1-PBS. Detection antibody: 83072-2-PBS. Standard: Ag34628. Range: 0.625-20 ng/mL



Cytometric bead array standard curve ofMP00053-3, SLC7A10 Recombinant Matched Antibody Pair, PBS Only. Capture antibody: 83072-4-PBS. Detection antibody: 83072-2-PBS. Standard: Ag34628. Range: 0.625-20 ng/mL