

For Research Use Only

ECM1 Recombinant antibody, PBS Only (Capture)

Catalog Number: 83067-7-PBS



Basic Information

Catalog Number:

83067-7-PBS

Size:

1 mg/ml

Source:

Rabbit

Isotype:

IgG

GenBank Accession Number:

BC023505

GeneID (NCBI):

1893

UNIPROT ID:

Q16610

Full Name:

extracellular matrix protein 1

Calculated MW:

540 aa, 61 kDa

Purification Method:

Protein A purification

CloneNo.:

230321A11

Applications

Tested Applications:

Sandwich ELISA, Indirect ELISA, Sample test

Species Specificity:

human

Background Information

Storage

Storage:

Store at -80°C.

The product is shipped with ice packs. Upon receipt, store it immediately at -80°C

Storage Buffer:

PBS Only

For technical support and original validation data for this product please contact:

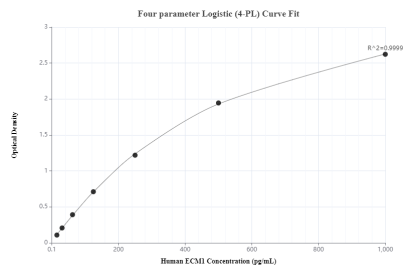
T: 4006900926

E: Proteintech-CN@ptglab.com

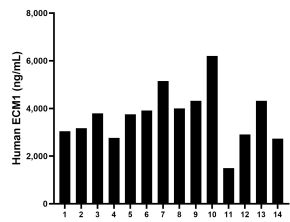
W: ptgcn.com

This product is exclusively available under Proteintech Group brand and is not available to purchase from any other manufacturer.

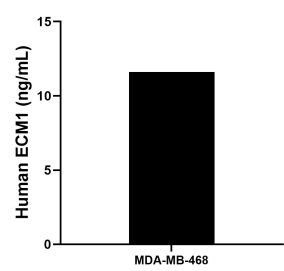
Selected Validation Data



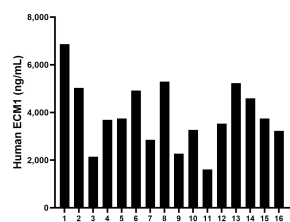
Sandwich ELISA standard curve of MP00011-4, Human ECM1 Recombinant Matched Antibody Pair - PBS only. 83067-7-PBS was coated to a plate as the capture antibody and incubated with serial dilutions of standard Eg0533. 83067-1-PBS was HRP conjugated as the detection antibody. Range: 15.6-1000 pg/mL



Plasma of fourteen individual healthy human donors was measured. The ECM1 concentration of detected samples was determined to be 3,683.47 ng/mL with a range of 1,495.22-6,198.62 ng/mL



MDA-MB-468 were cultured in DMEM supplemented with 10% fetal calf serum, 50 μ M β -mercaptoethanol, 2 mM L-glutamine, 100 U/mL penicillin and 100 μ g/mL streptomycin sulfate. The cell culture supernatant was removed, assayed for human ECM1, and measured 11.6 ng/mL



Serum of fourteen individual healthy human donors was measured. The ECM1 concentration of detected samples was determined to be 3,875.31 ng/mL with a range of 1,605.39-6,867.83 ng/mL