

For Research Use Only

CD14 Recombinant antibody, PBS Only (Detector)



Catalog Number: 83055-1-PBS

Basic Information

Catalog Number:

83055-1-PBS

Size:

1mg/ml

Source:

Rabbit

Isotype:

IgG

GenBank Accession Number:

BC010507

GeneID (NCBI):

929

ENSEMBL Gene ID:

ENSG00000170458

UNIPROT ID:

P08571

Full Name:

CD14 molecule

Calculated MW:

375 aa, 40 kDa

Purification Method:

Protein A purification

CloneNo.:

230332C4

Applications

Tested Applications:

Cytometric bead array, Sandwich ELISA, Indirect ELISA, Sample test

Species Specificity:

human

Background Information

Storage

Storage:

Store at -80°C.

The product is shipped with ice packs. Upon receipt, store it immediately at -80°C

Storage Buffer:

100% PBS pH 7.3

For technical support and original validation data for this product please contact:

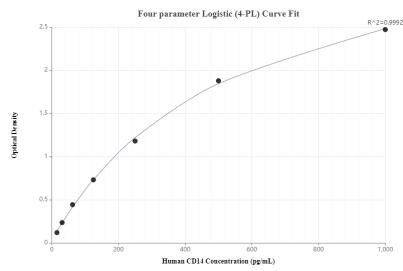
T: 4006900926

E: Proteintech-CN@ptglab.com

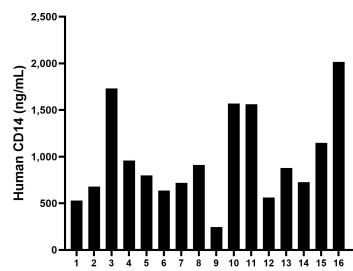
W: ptgcn.com

This product is exclusively available under Proteintech Group brand and is not available to purchase from any other manufacturer.

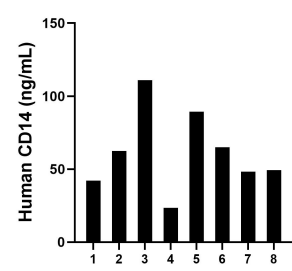
Selected Validation Data



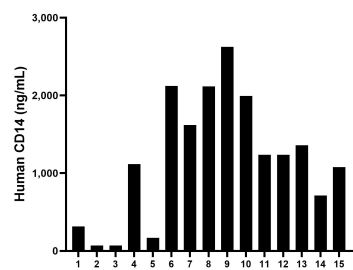
Sandwich ELISA standard curve of MP00058-4, CD14 Recombinant Matched Antibody Pair - PBS only. 83055-7-PBS was coated to a plate as the capture antibody and incubated with serial dilutions of standard Eg0498. 83055-1-PBS was HRP conjugated as the detection antibody. Range: 15.6-1000 pg/mL



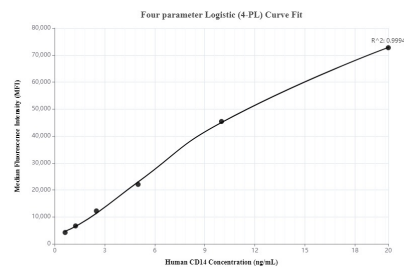
Plasma of sixteen individual healthy human donors was measured. The CD14 concentration of detected samples was determined to be 979.3 ng/mL with a range of 246.0 - 2015.1 ng/mL



Saliva of eight individual healthy human donors was measured. The CD14 concentration of detected samples was determined to be 61.4 ng/mL with a range of 23.6 - 110.8 ng/mL



Serum of fifteen individual healthy human donors was measured. The CD14 concentration of detected samples was determined to be 1189.4 ng/mL with a range of 69.0 - 2626.1 ng/mL



Cytometric bead array standard curve of MP00058-1, CD14 Recombinant Matched Antibody Pair, PBS Only. Capture antibody: 83055-2-PBS. Detection antibody: 83055-1-PBS. Standard: Eg0498. Range: 0.625-20 ng/mL