

For Research Use Only

# OATP1B1/SLCO1B1 Recombinant antibody, PBS Only (Detector)

Catalog Number: 83054-3-PBS



## Basic Information

Catalog Number:

83054-3-PBS

Size:

1mg/ml

Source:

Rabbit

Isotype:

IgG

GenBank Accession Number:

NM\_006446

GeneID (NCBI):

10599

UNIPROT ID:

Q9Y6L6

Full Name:

solute carrier organic anion  
transporter family, member 1B1

Calculated MW:

76 kDa

Purification Method:

Protein A purification

CloneNo.:

230090G9

## Applications

Tested Applications:

Cytometric bead array, Sandwich ELISA, Indirect ELISA,  
Sample test

Species Specificity:

human

## Background Information

### Storage

Storage:

Store at -80°C.

**The product is shipped with ice packs. Upon receipt, store it immediately at -80°C**

Storage Buffer:

100% PBS pH 7.3

For technical support and original validation data for this product please contact:

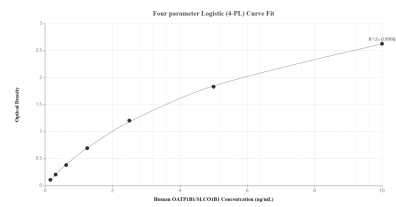
T: 4006900926

E: [Proteintech-CN@ptglab.com](mailto:Proteintech-CN@ptglab.com)

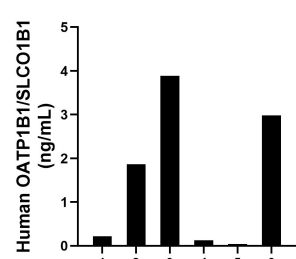
W: [ptgcn.com](http://ptgcn.com)

**This product is exclusively available under Proteintech Group brand and is not available to purchase from any other manufacturer.**

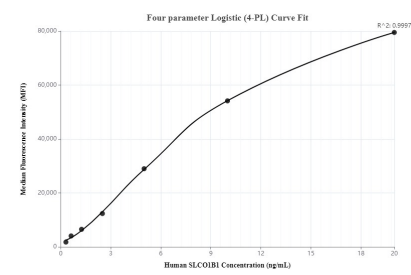
Selected Validation Data



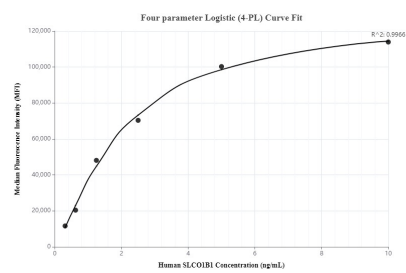
Sandwich ELISA standard curve of MP00051-4, Human OATP1B1/SLCO1B1 Recombinant Matched Antibody Pair - PBS only. 83054-6-PBS was coated to a plate as the capture antibody and incubated with serial dilutions of standard SY00964. 83054-3-PBS was HRP conjugated as the detection antibody. Range: 0.156-10 ng/mL



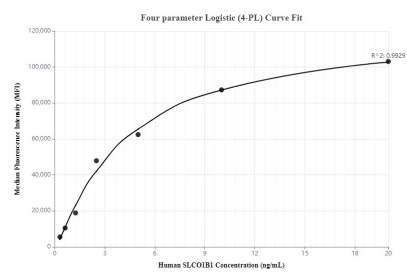
Serum of six individual healthy human donors was measured. The OATP1B1/SLCO1B1 concentration of detected samples was determined to be 1.52 ng/mL with a range of 0.04-3.89 ng/mL



Cytometric bead array standard curve of MP00051-1, SLCO1B1 Recombinant Matched Antibody Pair, PBS Only. Capture antibody: 83054-1-PBS. Detection antibody: 83054-3-PBS. Standard: SY00964. Range: 0.312-20 ng/mL



Cytometric bead array standard curve of MP00051-2, SLCO1B1 Recombinant Matched Antibody Pair, PBS Only. Capture antibody: 83054-4-PBS. Detection antibody: 83054-3-PBS. Standard: SY00964. Range: 0.312-10 ng/mL



Cytometric bead array standard curve of MP00051-3, SLCO1B1 Recombinant Matched Antibody Pair, PBS Only. Capture antibody: 83054-2-PBS. Detection antibody: 83054-3-PBS. Standard: SY00964. Range: 0.312-20 ng/mL