

For Research Use Only

ITB3 Recombinant monoclonal antibody, PBS Only (Detector)

Catalog Number:83053-8-PBS



Basic Information

Catalog Number:

83053-8-PBS

Source:

Rabbit

Isotype:

IgG

Immunogen Catalog Number:

EG10480

GenBank Accession Number:

GeneID (NCBI):

3690

Full Name:

integrin, beta 3 (platelet glycoprotein IIIa, antigen CD61)

Purification Method:

Protein A purification

CloneNo.:

252741G6

Applications

Tested Applications:

Sandwich ELISA, Indirect ELISA

Species Specificity:

human

Background Information

Storage

Storage:

Store at -80°C.

The product is shipped with ice packs. Upon receipt, store it immediately at -80°C

Storage Buffer:

PBS only, pH7.3

For technical support and original validation data for this product please contact:

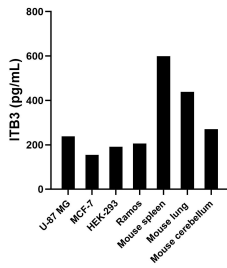
T: 4006900926

E: Proteintech-CN@ptglab.com

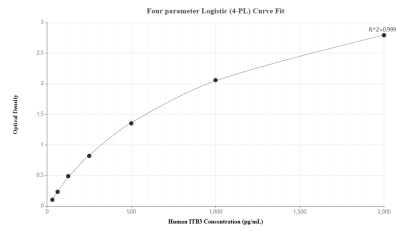
W: ptgcn.com

This product is exclusively available under Proteintech Group brand and is not available to purchase from any other manufacturer.

Selected Validation Data



The mean CD61 / Integrin beta 3 concentration was determined to be 238.6 pg/mL in U-87 MG cell extract based on a 1.2 mg/mL extract load, 154.3 pg/mL in MCF-7 cell extract based on a 1.2 mg/mL extract load, 191.7 pg/mL in HEK-293 cell extract based on a 1.5 mg/mL extract load, 205.5 pg/mL in Ramos cell extract based on a 1.5 mg/mL extract load, 599.2 pg/mL in mouse spleen tissue extract based on a 7.6 mg/mL extract load, 438.0 pg/mL in mouse lung



Sandwich ELISA standard curve of MP00047-3, Human CD61 / Integrin beta 3 Recombinant Matched Antibody Pair - PBS only. 83053-9-PBS was coated to a plate as the capture antibody and incubated with serial dilutions of standard Eg10480. 83053-8-PBS was HRP conjugated as the detection antibody. Range: 31.25-2000 pg/mL