

# Integrin beta 3 Recombinant antibody, PBS Only

Catalog Number: 83053-4-PBS

## Basic Information

<b>Catalog Number:</b> 83053-4-PBS	<b>GenBank Accession Number:</b> BC127667	<b>Purification Method:</b> Protein A purification
<b>Size:</b> 1 mg/ml	<b>GeneID (NCBI):</b> 3690	<b>CloneNo.:</b> 230292D5
<b>Source:</b> Rabbit	<b>UNIPROT ID:</b> P05106	
<b>Isotype:</b> IgG	<b>Full Name:</b> integrin, beta 3 (platelet glycoprotein IIIa, antigen CD61)	
	<b>Calculated MW:</b> 87 kDa	
	<b>Observed MW:</b> 100-110 kDa	

## Applications

**Tested Applications:**  
IF/ICC, FC (Intra), Indirect ELISA

**Species Specificity:**  
human

## Background Information

Integrin beta-3, also named as CD61 and GPIIIa, is a receptor for cytotactin, fibronectin, laminin, matrix metalloproteinase-2, osteopontin, osteomodulin, prothrombin, thrombospondin, vitronectin and von Willebrand factor. Integrin beta-3 recognize the sequence R-G-D in a wide array of ligands and the sequence H-H-L-G-G-A-K-Q-A-G-D-V in fibrinogen gamma chain. Following activation integrin beta-3 brings about platelet/platelet interaction through binding of soluble fibrinogen which leads to rapid platelet aggregation which physically plugs ruptured endothelial surface. In case of HIV-1 infection, the interaction with extracellular viral Tat protein seems to enhance angiogenesis in Kaposi's sarcoma lesions. Human integrin beta-3 has a calculated molecular weight of 87 kDa. As a result of glycosylation, the apparent molecular mass of integrin beta-3 is approximately 90-110 kDa.

## Storage

**Storage:**  
Store at -80°C.  
**The product is shipped with ice packs. Upon receipt, store it immediately at -80°C**

**Storage Buffer:**  
PBS Only

For technical support and original validation data for this product please contact:

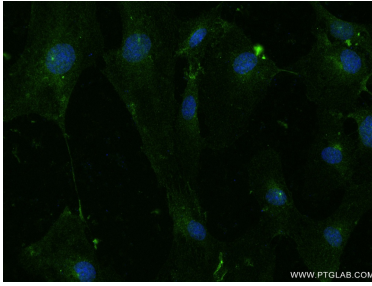
T: 4006900926

E: [Proteintech-CN@ptglab.com](mailto:Proteintech-CN@ptglab.com)

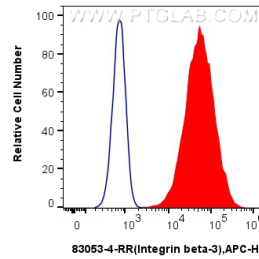
W: [ptgcn.com](http://ptgcn.com)

**This product is exclusively available under Proteintech Group brand and is not available to purchase from any other manufacturer.**

## Selected Validation Data



Immunofluorescent analysis of (4% PFA) fixed HUVEC cells using Integrin beta-3 antibody (83053-4-RR, Clone: 230292D5 ) at dilution of 1:400 and CoraLite@488-Conjugated AffiniPure Goat Anti-Rabbit IgG(H+L) (SA00013-2). This data was developed using the same antibody clone with 83053-4-PBS in a different storage buffer formulation.



1x10<sup>6</sup> HUVEC cells were intracellularly stained with 0.25 ug Anti-Human Integrin beta-3 (83053-4-RR, Clone:230292D5) and APC-Conjugated AffiniPure Goat Anti-Rabbit IgG(H+L)(red), or 0.25 ug Rabbit IgG control Rabbit PolyAb (30000-0-AP) (blue). Cells were fixed with 4% PFA and permeabilized with Flow Cytometry Perm Buffer (PF00011-C). This data was developed using the same antibody clone with 83053-4-PBS in a different storage buffer formulation.