

For Research Use Only

SURF1 Recombinant antibody, PBS Only (Capture)

Catalog Number: 83052-2-PBS



Basic Information

Catalog Number:

83052-2-PBS

Concentration:

1mg/ml

Source:

Rabbit

Isotype:

IgG

Immunogen Catalog Number:

AG3959

GenBank Accession Number:

BC028314

GeneID (NCBI):

6834

UNIPROT ID:

Q15526

Full Name:

surfeit 1

Calculated MW:

33 kDa

Purification Method:

Protein A purification

CloneNo.:

230210D1

Applications

Tested Applications:

Cytometric bead array, Sandwich ELISA, Indirect ELISA, Sample test

Species Specificity:

human

Background Information

Storage

Storage:

Store at -80°C.

The product is shipped with ice packs. Upon receipt, store it immediately at -80°C

Storage Buffer:

100% PBS pH 7.3

For technical support and original validation data for this product please contact:

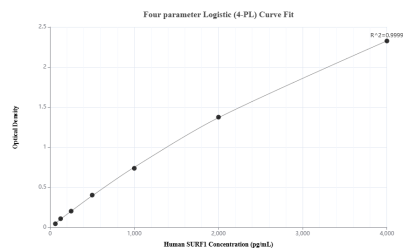
T: 4006900926

E: Proteintech-CN@ptglab.com

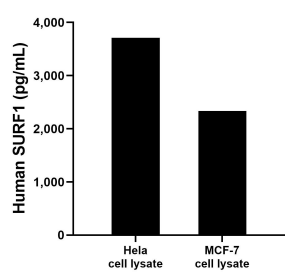
W: ptgcn.com

This product is exclusively available under Proteintech Group brand and is not available to purchase from any other manufacturer.

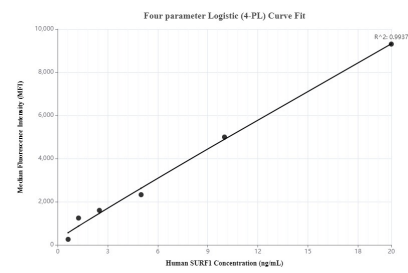
Selected Validation Data



Sandwich ELISA standard curve of MP00034-4, Human SURF1 Recombinant Matched Antibody Pair - PBS only. 83052-2-PBS was coated to a plate as the capture antibody and incubated with serial dilutions of standard Ag3959. 83052-8-PBS was HRP conjugated as the detection antibody. Range: 62.5-4000 pg/mL.



HeLa and MCF-7 cell lysates were measured. The human SURF1 concentration of detected samples was determined to be 3,709.4 pg/mL (based on a 6.4 mg/mL extract load) in HeLa cell lysate and 2,335.0 pg/mL (based on a 4.3 mg/mL extract load) in MCF-7 cell lysate.



Cytometric bead array standard curve of MP00034-3, SURF1 Recombinant Matched Antibody Pair, PBS Only. Capture antibody: 83052-2-PBS. Detection antibody: 83052-5-PBS. Standard: Ag3959. Range: 0.625-20 ng/mL.