

For Research Use Only

VEGFR2/KDR Recombinant antibody, PBS Only (Capture)

Catalog Number: 83049-2-PBS



Basic Information

Catalog Number:

83049-2-PBS

Size:

1 mg/ml

Source:

Rabbit

Isotype:

IgG

GenBank Accession Number:

NM_002253

GeneID (NCBI):

3791

UNIPROT ID:

P35968-1

Full Name:

kinase insert domain receptor (a type
III receptor tyrosine kinase)

Calculated MW:

152kd

Purification Method:

Protein A purification

CloneNo.:

230238D2

Affinity:

$K_D = 1.15 \times 10^{-9}$

$K_{Off} = 2.30 \times 10^{-4}$

$K_{On} = 2.00 \times 10^5$

Applications

Tested Applications:

Cytometric bead array, Sandwich ELISA, Indirect ELISA,
Sample test

Species Specificity:

human

Background Information

Storage

Storage:

Store at -80°C.

The product is shipped with ice packs. Upon receipt, store it immediately at -80°C

Storage Buffer:

100% PBS pH 7.3

For technical support and original validation data for this product please contact:

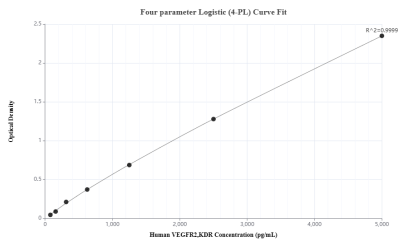
T: 4006900926

E: Proteintech-CN@ptglab.com

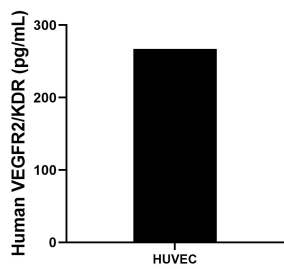
W: ptgcn.com

This product is exclusively available under Proteintech Group brand and is not available to purchase from any other manufacturer.

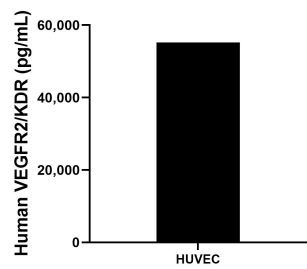
Selected Validation Data



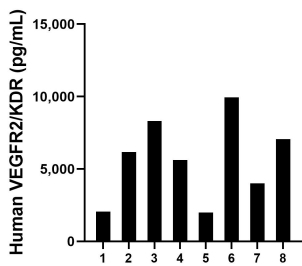
Sandwich ELISA standard curve of MP00012-3, Human VEGFR2/KDR Recombinant Matched Antibody Pair - PBS only. 83049-2-PBS was coated to a plate as the capture antibody and incubated with serial dilutions of standard Eg0218.83049-5-PBS was HRP conjugated as the detection antibody. Range: 78.1-5000 pg/mL



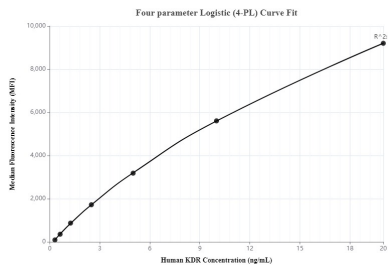
HUVEC was cultured in RPMI supplemented with 10% fetal bovine serum, 50 μ M β - mercaptoethanol, 2 mM L-glutamine, 100 U/mL penicillin, and 100 μ g/mL streptomycin sulfate. An aliquot of the cell culture supernatant was removed, assayed for human VEGFR2/KDR, and measured 267.3 pg/mL.



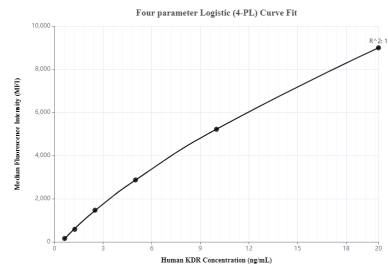
The mean human VEGFR2/KDR concentration was determined to be 55,216.6 pg/mL in HUVEC cell extract based on a 0.4 mg/mL extract load.



Plasma of eight individual healthy human donors was measured. The human VEGFR2/KDR concentration of detected samples was determined to be 5,643.5 ng/mL with a range of 1,988.2 - 9,946.0 pg/mL



Cytometric bead array standard curve of MP00012-1, KDR Recombinant Matched Antibody Pair - PBS only. Capture antibody: 83049-2-PBS. Detection antibody: 83049-3-PBS. Standard: Eg0218. Range: 0.312-20 ng/mL



Cytometric bead array standard curve of MP00012-2, KDR Recombinant Matched Antibody Pair - PBS only. Capture antibody: 83049-2-PBS. Detection antibody: 83049-1-PBS. Standard: Eg0218. Range: 0.625-20 ng/mL