

For Research Use Only

# Acetyl-Histone H2A (Lys9) Recombinant antibody, PBS Only (Capture)

Catalog Number: 83041-1-PBS



## Basic Information

Catalog Number:

83041-1-PBS

Size:

1 mg/ml

Source:

Rabbit

Isotype:

IgG

GenBank Accession Number:

BC093836

GeneID (NCBI):

3012

UNIPROT ID:

P04908

Full Name:

histone cluster 1, H2ae

Calculated MW:

14 kDa

Observed MW:

14 kDa

Purification Method:

Protein A purification

CloneNo.:

230349B1

## Applications

Tested Applications:

WB, IHC, IF/ICC, Dot Blot, Cytometric bead array,  
Indirect ELISA

Species Specificity:

human, mouse

## Background Information

Histone H2A is a core component of nucleosome. Histone variants contribute to chromatin complexity by creating specialized nucleosomes. Within nucleosomes, either one canonical H2A or both of them can be exchanged with a particular variant (heterotypic and homotypic nucleosomes, respectively), and such changes can have profound influences on nucleosome stability and biological outcome.

## Storage

Storage:

Store at -80°C.

**The product is shipped with ice packs. Upon receipt, store it immediately at -80°C**

Storage Buffer:

100% PBS pH 7.3

For technical support and original validation data for this product please contact:

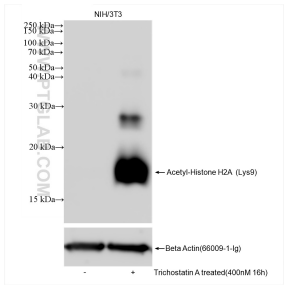
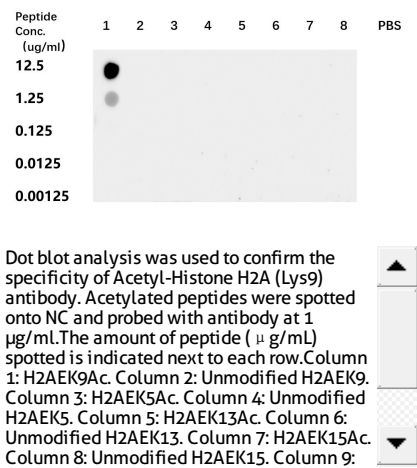
T: 4006900926

E: [Proteintech-CN@ptglab.com](mailto:Proteintech-CN@ptglab.com)

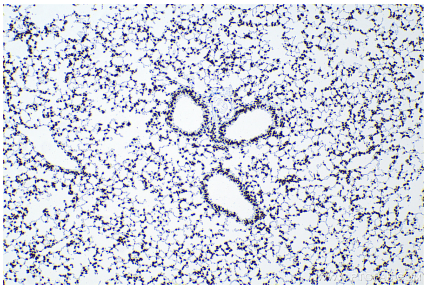
W: [ptgcn.com](http://ptgcn.com)

**This product is exclusively available under Proteintech Group brand and is not available to purchase from any other manufacturer.**

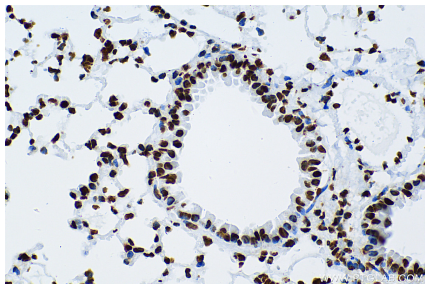
Selected Validation Data



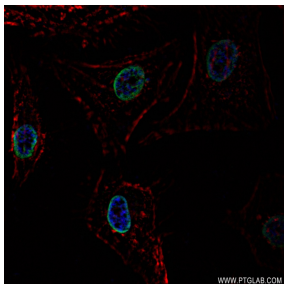
Trichostatin A treated NIH/3T3 cells were subjected to SDS PAGE followed by western blot with 83041-1-RR (Acetyl-Histone H2A (Lys9) antibody) at dilution of 1:5000 incubated at room temperature for 1.5 hours. This data was developed using the same antibody clone with 83041-1-PBS in a different storage buffer formulation.



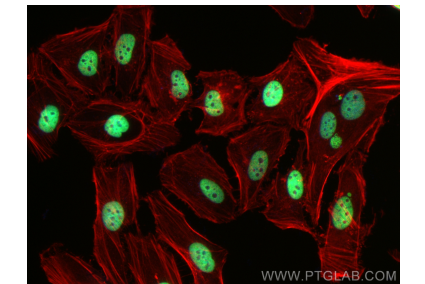
Immunohistochemical analysis of paraffin-embedded mouse lung tissue slide using 83041-1-RR (Acetyl-Histone H2A (Lys9) antibody) at dilution of 1:500 (under 10x lens). Heat mediated antigen retrieval with Tris-EDTA buffer (pH 9.0). This data was developed using the same antibody clone with 83041-1-PBS in a different storage buffer formulation.



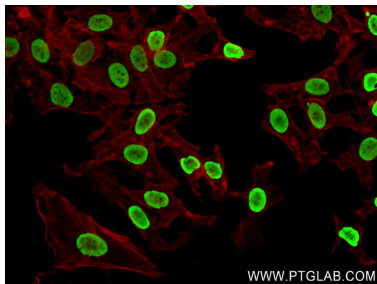
Immunohistochemical analysis of paraffin-embedded mouse lung tissue slide using 83041-1-RR (Acetyl-Histone H2A (Lys9) antibody) at dilution of 1:500 (under 40x lens). Heat mediated antigen retrieval with Tris-EDTA buffer (pH 9.0). This data was developed using the same antibody clone with 83041-1-PBS in a different storage buffer formulation.



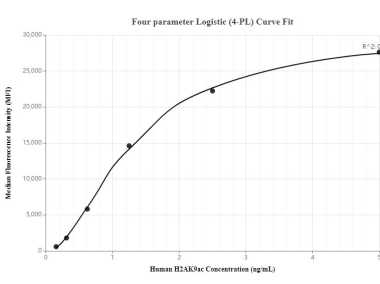
Immunofluorescent analysis of (4% PFA) fixed HeLa cells using Acetyl-Histone H2A (Lys9) antibody (83041-1-RR, Clone: 230349B1) at dilution of 1:150 and CoraLite@488-Conjugated AffiniPure Goat Anti-Rabbit IgG(H+L) (SA00013-2). This data was developed using the same antibody clone with 83041-1-PBS in a different storage buffer formulation.



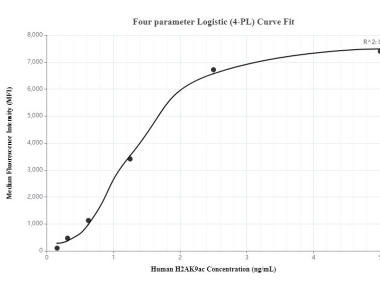
Immunofluorescent analysis of (4% PFA) fixed HeLa cells using Acetyl-Histone H2A (Lys9) antibody (83041-1-RR, Clone: 230349B1) at dilution of 1:400 and CoraLite@488-Conjugated AffiniPure Goat Anti-Rabbit IgG(H+L) (SA00013-2), CL594-Phalloidin (red). This data was developed using the same antibody clone with 83041-1-PBS in a different storage buffer formulation.



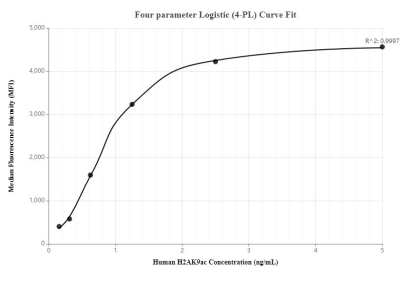
Immunofluorescent analysis of (4% PFA) fixed HeLa cells using Acetyl-Histone H2A (Lys9) antibody (83041-1-RR, Clone: 230349B1) at dilution of 1:400 and CoraLite@488-Conjugated AffiniPure Goat Anti-Rabbit IgG(H+L) (SA00013-2), CL594-Phalloidin (red). This data was developed using the same antibody clone with 83041-1-PBS in a different storage buffer formulation.



Cytometric bead array standard curve of MP00085-1, HIST1H2AE Recombinant Matched Antibody Pair, PBS Only. Capture antibody: 83041-1-PBS. Detection antibody: 83041-4-PBS. Standard: SY02140Ac. Range: 0.156-5 ng/mL.



Cytometric bead array standard curve of MP00085-2, HIST1H2AE Recombinant Matched Antibody Pair, PBS Only. Capture antibody: 83041-1-PBS. Detection antibody: 83041-3-PBS. Standard: SY02140Ac. Range: 0.156-5 ng/mL.



Cytometric bead array standard curve of MP00085-3, HIST1H2AE Recombinant Matched Antibody Pair, PBS Only. Capture antibody: 83041-1-PBS. Detection antibody: 83041-2-PBS. Standard: SY02140Ac. Range: 0.156-5 ng/mL