

For Research Use Only

SALL4 Recombinant antibody, PBS Only (Capture)

Catalog Number: 83039-2-PBS



Basic Information

Catalog Number:

83039-2-PBS

Size:

1mg/ml

Source:

Rabbit

Isotype:

IgG

Immunogen Catalog Number:

AG16076

GenBank Accession Number:

BC111714

GeneID (NCBI):

57167

UNIPROT ID:

Q9UJQ4

Full Name:

sal-like 4 (Drosophila)

Calculated MW:

1053 aa, 112 kDa

Purification Method:

Protein A purification

CloneNo.:

230284D4

Applications

Tested Applications:

Sandwich ELISA, Indirect ELISA, Sample test

Species Specificity:

human

Background Information

Storage

Storage:

Store at -80°C.

The product is shipped with ice packs. Upon receipt, store it immediately at -80°C

Storage Buffer:

100% PBS pH 7.3

For technical support and original validation data for this product please contact:

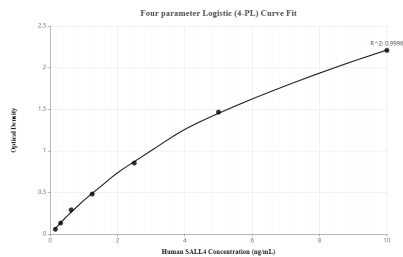
T: 4006900926

E: Proteintech-CN@ptglab.com

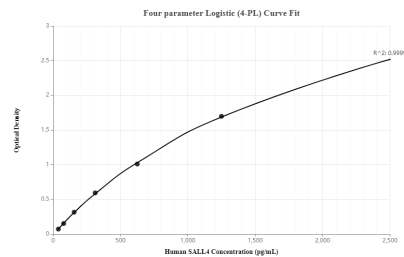
W: ptgcn.com

This product is exclusively available under Proteintech Group brand and is not available to purchase from any other manufacturer.

Selected Validation Data



Sandwich ELISA standard curve of MP00137-1, SALL4 Recombinant Matched Antibody Pair, PBS Only. Capture antibody: 83039-2-PBS. Detection antibody: 83039-1-PBS. Standard: Ag16076. Range: 0.156-10 ng/mL



Sandwich ELISA standard curve of MP00137-2, SALL4 Recombinant Matched Antibody Pair, PBS Only. Capture antibody: 83039-2-PBS. Detection antibody: 83039-3-PBS. Standard: Ag16076. Range: 39-2500 pg/mL