

For Research Use Only

DRD1 Recombinant antibody, PBS Only (Capture/Detector)

Catalog Number: 83037-7-PBS



Basic Information

Catalog Number:

83037-7-PBS

Size:

1 mg/ml

Source:

Rabbit

Isotype:

IgG

Immunogen Catalog Number:

AG12366

GenBank Accession Number:

BC074978

GeneID (NCBI):

1812

UNIPROT ID:

P21728

Full Name:

dopamine receptor D1

Calculated MW:

446 aa, 49 kDa

Purification Method:

Protein A purification

CloneNo.:

241782E9

Applications

Tested Applications:

Cytometric bead array, Sandwich ELISA, Indirect ELISA,
Sample test

Species Specificity:

human

Background Information

Storage

Storage:

Store at -80°C.

The product is shipped with ice packs. Upon receipt, store it immediately at -80°C

Storage Buffer:

PBS Only

For technical support and original validation data for this product please contact:

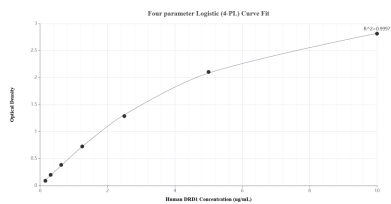
T: 4006900926

E: Proteintech-CN@ptglab.com

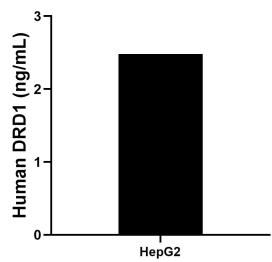
W: ptgcn.com

This product is exclusively available under Proteintech Group brand and is not available to purchase from any other manufacturer.

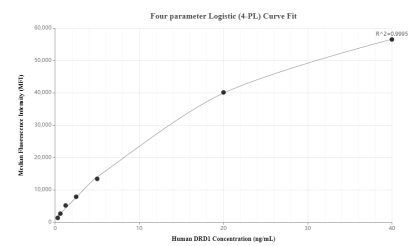
Selected Validation Data



Sandwich ELISA standard curve of MP01326-3, Human DRD1 Recombinant Matched Antibody Pair - PBS only. 83037-7-PBS was coated to a plate as the capture antibody and incubated with serial dilutions of standard Ag12366. 83037-8-PBS was HRP conjugated as the detection antibody. Range: 0.156-10 ng/mL



The mean DRD1 concentration was determined to be 2.48 ng/mL in HepG2 cell extract based on a 2.30 mg/mL extract load.



Cytometric bead array standard curve of MP01326-1, DRD1 Recombinant Matched Antibody Pair, PBS Only. Capture antibody: 83037-5-PBS. Detection antibody: 83037-7-PBS. Standard: Ag12366. Range: 0.313-40 ng/mL