

For Research Use Only

# Collagen Type XV Recombinant antibody, PBS Only (Capture/Detector)

Catalog Number: 83031-3-PBS



## Basic Information

Catalog Number:

83031-3-PBS

Concentration:

1mg/ml

Source:

Rabbit

Isotype:

IgG

Immunogen Catalog Number:

AG34644

GenBank Accession Number:

BC157094

GeneID (NCBI):

1306

UNIPROT ID:

P39059

Full Name:

collagen, type XV, alpha 1

Purification Method:

Protein A purification

CloneNo.:

230248F4

## Applications

Tested Applications:

Sandwich ELISA, Indirect ELISA, Sample test

Species Specificity:

human

## Background Information

### Storage

Storage:

Store at -80°C.

The product is shipped with ice packs. Upon receipt, store it immediately at -80°C

Storage Buffer:

PBS only, pH7.3

For technical support and original validation data for this product please contact:

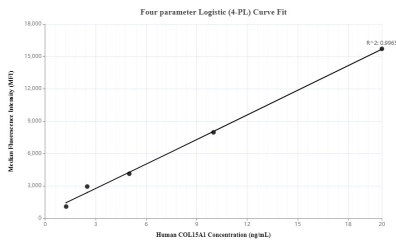
T: 4006900926

E: [Proteintech-CN@ptglab.com](mailto:Proteintech-CN@ptglab.com)

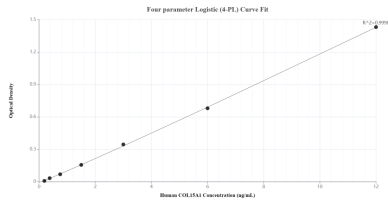
W: [ptgcn.com](http://ptgcn.com)

This product is exclusively available under Proteintech Group brand and is not available to purchase from any other manufacturer.

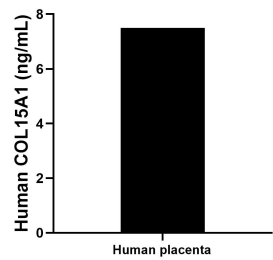
## Selected Validation Data



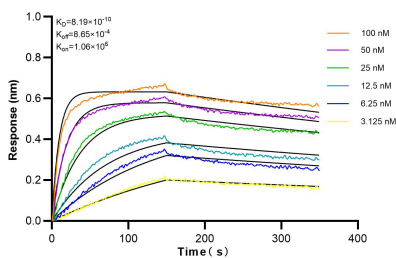
Sandwich ELISA standard curve of MP00133-2, COL15A1 Recombinant Matched Antibody Pair, PBS Only. Capture antibody: 83031-4-PBS. Detection antibody: 83031-3-PBS. Standard: Ag34644. Range: 1.25-20 ng/mL.



Sandwich ELISA standard curve of MP00133-4, Human COL15A1 Recombinant Matched Antibody Pair - PBS only. 83031-3-PBS was coated to a plate as the capture antibody and incubated with serial dilutions of standard Ag34644. 83031-1-PBS was HRP conjugated as the detection antibody. Range: 0.188-12 ng/mL.



The mean COL15A1 concentration was determined to be 7.50 ng/mL in human placenta extract based on a 2.40 mg/mL extract load.



Biolayer interferometry (BLI) kinetic assays of 83031-3-RR against Human COL15A1 were performed. The affinity constant is 0.819 nM.