

For Research Use Only

# BMPR1B Recombinant antibody, PBS Only (Capture/Detector)

Catalog Number: 83029-4-PBS



## Basic Information

Catalog Number:

83029-4-PBS

Size:

1mg/ml

Source:

Rabbit

Isotype:

IgG

Immunogen Catalog Number:

AG24902

GenBank Accession Number:

BC047773

GeneID (NCBI):

658

UNIPROT ID:

O00238

Full Name:

bone morphogenetic protein receptor,  
type IB

Calculated MW:

57 kDa

Purification Method:

Protein A purification

CloneNo.:

230244E12

## Applications

Tested Applications:

Cytometric bead array, Sandwich ELISA, Indirect ELISA,  
Sample test

Species Specificity:

human

## Background Information

### Storage

Storage:

Store at -80°C.

The product is shipped with ice packs. Upon receipt, store it immediately at -80°C

Storage Buffer:

100% PBS pH 7.3

For technical support and original validation data for this product please contact:

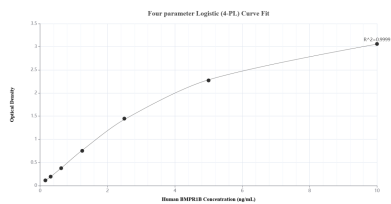
T: 4006900926

E: [Proteintech-CN@ptglab.com](mailto:Proteintech-CN@ptglab.com)

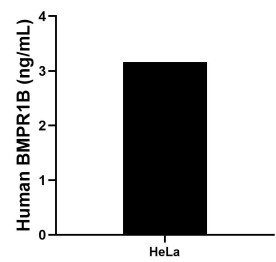
W: [ptgcn.com](http://ptgcn.com)

This product is exclusively available under Proteintech Group brand and is not available to purchase from any other manufacturer.

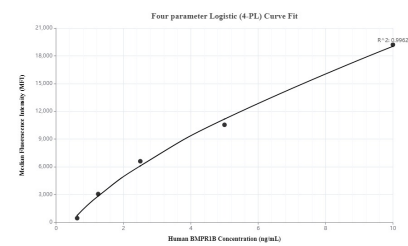
## Selected Validation Data



Sandwich ELISA standard curve of MP00108-4, Human BMPR1B Recombinant Matched Antibody Pair - PBS only. 83029-4-PBS was coated to a plate as the capture antibody and incubated with serial dilutions of standard Ag24902. 83029-8-PBS was HRP conjugated as the detection antibody. Range: 0.156-10 ng/mL.



The mean BMPR1B concentration was determined to be 3.16 ng/mL in HeLa cell extract based on a 1.50 mg/mL extract load.



Cytometric bead array standard curve of MP00108-3, BMPR1B Recombinant Matched Antibody Pair - PBS only. Capture antibody: 83029-5-PBS. Detection antibody: 83029-4-PBS. Standard: Ag24902. Range: 0.625-10 ng/mL.