

For Research Use Only

# CLDN18 Recombinant antibody, PBS Only (Detector)

Catalog Number: 83028-5-PBS



## Basic Information

Catalog Number:

83028-5-PBS

Concentration:

1 mg/ml

Source:

Rabbit

Isotype:

IgG

Immunogen Catalog Number:

AG34049

GenBank Accession Number:

NM\_001002026

GeneID (NCBI):

51208

UNIPROT ID:

P56856-2

Full Name:

claudin 18

Calculated MW:

28 kDa

Purification Method:

Protein A purification

CloneNo.:

230198H1

## Applications

Tested Applications:

Sandwich ELISA, Indirect ELISA, Sample test

Species Specificity:

human

## Background Information

### Storage

Storage:

Store at -80°C.

The product is shipped with ice packs. Upon receipt, store it immediately at -80°C

Storage Buffer:

PBS only, pH7.3

For technical support and original validation data for this product please contact:

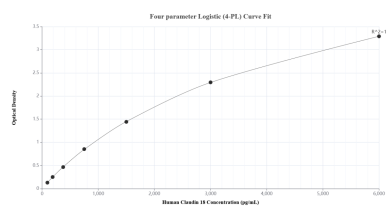
T: 4006900926

E: [Proteintech-CN@ptglab.com](mailto:Proteintech-CN@ptglab.com)

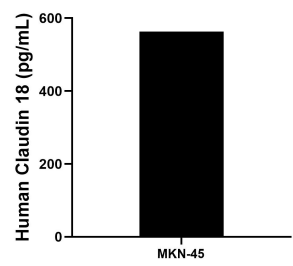
W: [ptgcn.com](http://ptgcn.com)

This product is exclusively available under Proteintech Group brand and is not available to purchase from any other manufacturer.

## Selected Validation Data



Sandwich ELISA standard curve of MP00105-3, Human Claudin 18 Recombinant Matched Antibody Pair - PBS only. 83028-4-PBS was coated to a plate as the capture antibody and incubated with serial dilutions of standard Ag34049. 83028-5-PBS was HRP conjugated as the detection antibody. Range: 93.8-6000 pg/mL.



The mean Claudin 18 concentration was determined to be 563.0 pg/mL in MKN-45 cell extract based on a 4.8 mg/mL extract load.