

For Research Use Only

# ACVR1B Recombinant antibody, PBS Only (Capture/Detector)

Catalog Number: 83026-4-PBS



## Basic Information

Catalog Number:

83026-4-PBS

Size:

1mg/ml

Source:

Rabbit

Isotype:

IgG

Immunogen Catalog Number:

AG0129

GenBank Accession Number:

BC000254

GeneID (NCBI):

91

UNIPROT ID:

P36896

Full Name:

activin A receptor, type IB

Calculated MW:

57 kDa

Purification Method:

Protein A purification

CloneNo.:

230260H5

## Applications

Tested Applications:

Cytometric bead array, Sandwich ELISA, Indirect ELISA, Sample test

Species Specificity:

human

## Background Information

### Storage

Storage:

Store at -80°C.

**The product is shipped with ice packs. Upon receipt, store it immediately at -80°C**

Storage Buffer:

100% PBS pH 7.3

For technical support and original validation data for this product please contact:

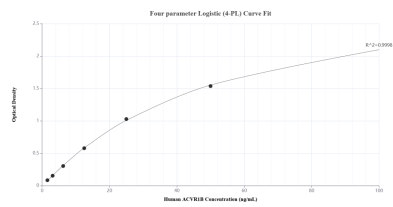
T: 4006900926

E: [Proteintech-CN@ptglab.com](mailto:Proteintech-CN@ptglab.com)

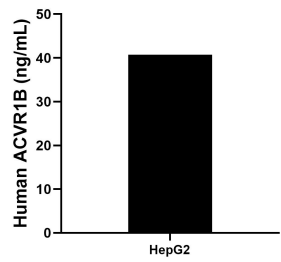
W: [ptgcn.com](http://ptgcn.com)

**This product is exclusively available under Proteintech Group brand and is not available to purchase from any other manufacturer.**

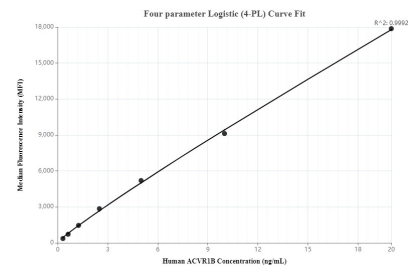
# Selected Validation Data



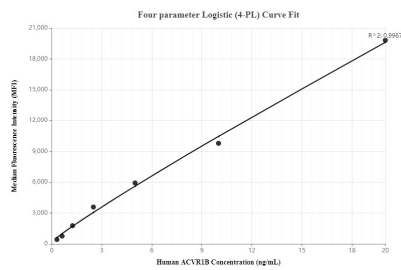
Sandwich ELISA standard curve of MP00098-4, Human ACVR1B Recombinant Matched Antibody Pair - PBS only. 83026-4-PBS was coated to a plate as the capture antibody and incubated with serial dilutions of standard Ag0129. 83026-7-PBS was HRP conjugated as the detection antibody. Range: 1.56-100 ng/mL



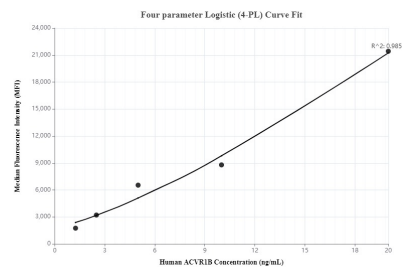
The mean ACVR1B concentration was determined to be 40.70 ng/mL in HepG2 cell extract based on a 1.00 mg/mL extract load.



Cytometric bead array standard curve of MP00098-1, ACVR1B Recombinant Matched Antibody Pair, PBS Only. Capture antibody: 83026-4-PBS. Detection antibody: 83026-3-PBS. Standard: Ag0129. Range: 0.313-20 ng/mL



Cytometric bead array standard curve of MP00098-2, ACVR1B Recombinant Matched Antibody Pair, PBS Only. Capture antibody: 83026-1-PBS. Detection antibody: 83026-4-PBS. Standard: Ag0129. Range: 0.313-20 ng/mL



Cytometric bead array standard curve of MP00098-3, ACVR1B Recombinant Matched Antibody Pair, PBS Only. Capture antibody: 83026-4-PBS. Detection antibody: 83026-2-PBS. Standard: Ag0129. Range: 1.25-20 ng/mL