

For Research Use Only

# FDFT1 Recombinant antibody, PBS Only

Catalog Number: 83020-1-PBS



## Basic Information

Catalog Number: 83020-1-PBS	GenBank Accession Number: BC029641	Purification Method: Protein A purification
Size: 1mg/ml	GeneID (NCBI): 2222	CloneNo.: 230362C10
Source: Rabbit	UNIPROT ID: P37268	
Isotype: IgG	Full Name: farnesyl-diphosphate farnesyltransferase 1	
Immunogen Catalog Number: AG3743	Calculated MW: 417 aa, 48 kDa	
	Observed MW: 48 kDa	

## Applications

**Tested Applications:**  
WB, IHC, IF/ICC, FC (Intra), Indirect ELISA

**Species Specificity:**  
human, mouse

## Background Information

SQS (Squalene synthase), also known as Farnesyl-diphosphate farnesyltransferase 1 (FDFT1) is a gene that encodes the membrane-associated enzyme squalene synthase, which is the first specific enzyme in cholesterol biosynthesis. FDFT1 is highly expressed in liver, lung, prostate, breast, ovary, bladder, cervix, thyroid, and esophageal cancers, while in colorectal, colon, testicular, uterine, pancreas, and kidney tumors, its expression is downregulated (PMID: 35093030). FDFT1 is a key downstream target of the fasting response and may be involved in CRC cell glucose metabolism (PMID: 32313017).

## Storage

**Storage:**  
Store at -80°C.  
**The product is shipped with ice packs. Upon receipt, store it immediately at -80°C**

**Storage Buffer:**  
PBS Only

For technical support and original validation data for this product please contact:

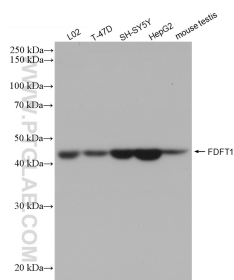
T: 4006900926

E: [Proteintech-CN@ptglab.com](mailto:Proteintech-CN@ptglab.com)

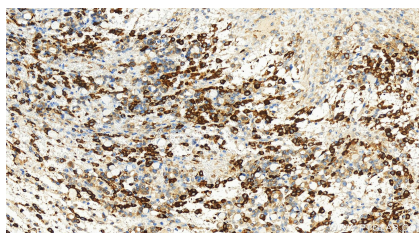
W: [ptgcn.com](http://ptgcn.com)

**This product is exclusively available under Proteintech Group brand and is not available to purchase from any other manufacturer.**

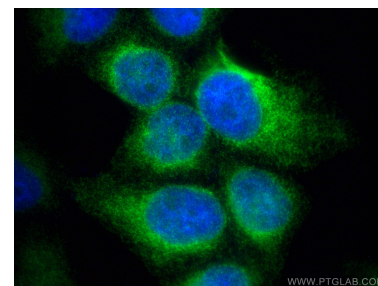
## Selected Validation Data



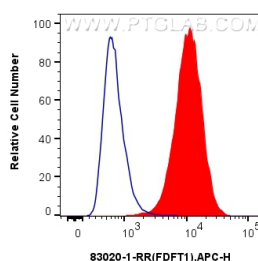
Various lysates were subjected to SDS PAGE followed by western blot with 83020-1-RR (FDFT1 antibody) at dilution of 1:10000 incubated at room temperature for 1.5 hours. This data was developed using the same antibody clone with 83020-1-PBS in a different storage buffer formulation.



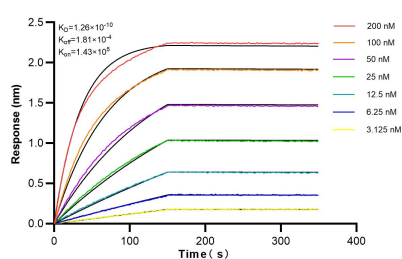
Immunohistochemical analysis of paraffin-embedded human ovary cancer tissue slide using 83020-1-RR (FDFT1 antibody) at dilution of 1:1000 (under 20x lens). Heat mediated antigen retrieval with Tris-EDTA buffer (pH 9.0). This data was developed using the same antibody clone with 83020-1-PBS in a different storage buffer formulation.



Immunofluorescent analysis of (4% PFA) fixed LO2 cells using FDFT1 antibody (83020-1-RR, Clone: 230362C10) at dilution of 1:500 and Multi-rAb CoraLite® Plus 488-Goat Anti-Rabbit Recombinant Secondary Antibody (H+L) (RGAR002). This data was developed using the same antibody clone with 83020-1-PBS in a different storage buffer formulation.



$1 \times 10^6$  U2OS cells were intracellularly stained with 0.25  $\mu$ g Anti-Human FDFT1 (83020-1-RR, Clone:230362C10) and APC-Conjugated AffiniPure Goat Anti-Rabbit IgG(H+L)(red), or 0.25  $\mu$ g Rabbit IgG control Rabbit PolyAb (30000-O-AP) (blue). Cells were fixed with 4% PFA and permeabilized with Flow Cytometry Perm Buffer (PF00011-C). This data was developed using the same antibody clone with 83020-1-PBS in a different storage buffer formulation.



Biolayer interferometry (BLI) kinetic assays of 83020-1-RR against Human FDFT1 were performed. The affinity constant is 0.126 nM.