

For Research Use Only

# CTAGE5 Recombinant antibody

Catalog Number: 83017-1-RR



## Basic Information

### Catalog Number:

83017-1-RR

### Size:

1000  $\mu$ g/ml

### Source:

Rabbit

### Isotype:

IgG

### GenBank Accession Number:

NM\_005930

### GeneID (NCBI):

4253

### UNIPROT ID:

Q96PC5

### Full Name:

CTAGE family, member 5

### Calculated MW:

92 kDa

### Purification Method:

Protein A purification

### CloneNo.:

230262E6

## Applications

### Tested Applications:

FC (Intra), ELISA

### Species Specificity:

human

## Background Information

Cutaneous T cell lymphoma-associated antigen 5 (CTAGE5) is a member of the cTAGE family. CTAGE5 is a tumor-associated antigen and is overexpressed in various cancer cell lines. CTAGE5 consists of a signal anchor motif, a single transmembrane domain, two coiled-coil motifs, and a proline-rich domain (PRD) from the N-terminus. CTAGE5 interacts with TANGO1 through its second coil region to form a cargo receptor complex (PMID: 21525241).

## Storage

### Storage:

Store at -20°C. Stable for one year after shipment.

### Storage Buffer:

PBS with 0.02% sodium azide and 50% glycerol pH 7.3.

Aliquoting is unnecessary for -20°C storage

For technical support and original validation data for this product please contact:

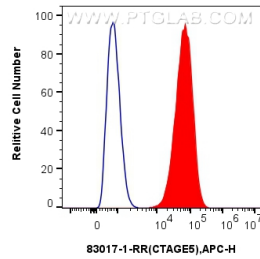
T: 4006900926

E: [Proteintech-CN@ptglab.com](mailto:Proteintech-CN@ptglab.com)

W: [ptgcn.com](http://ptgcn.com)

This product is exclusively available under Proteintech Group brand and is not available to purchase from any other manufacturer.

## Selected Validation Data



$1 \times 10^6$  HUVEC cells were intracellularly stained with 0.25  $\mu$ g Anti-Human CTAGE5 (83017-1-RR, Clone:230262E6) and APC-Conjugated AffiniPure Goat Anti-Rabbit IgG(H+L)(red), or 0.25  $\mu$ g Rabbit IgG control Rabbit PolyAb (30000-O-AP) (blue). Cells were fixed with 4% PFA and permeabilized with Flow Cytometry Perm Buffer (PF00011-C).