

For Research Use Only

# CTAGE5 Recombinant antibody, PBS Only (Capture)

Catalog Number: 83017-1-PBS



## Basic Information

Catalog Number:

83017-1-PBS

Size:

1mg/ml

Source:

Rabbit

Isotype:

IgG

GenBank Accession Number:

NM\_005930

GeneID (NCBI):

4253

UNIPROT ID:

Q96PC5

Full Name:

CTAGE family, member 5

Calculated MW:

92 kDa

Purification Method:

Protein A purification

CloneNo.:

230262E6

## Applications

Tested Applications:

FC (Intra), Cytometric bead array, Indirect ELISA

Species Specificity:

human

## Background Information

Cutaneous T cell lymphoma-associated antigen 5 (CTAGE5) is a member of the cTAGE family. CTAGE5 is a tumor-associated antigen and is overexpressed in various cancer cell lines. CTAGE5 consists of a signal anchor motif, a single transmembrane domain, two coiled-coil motifs, and a proline-rich domain (PRD) from the N-terminus. CTAGE5 interacts with TANGO1 through its second coil region to form a cargo receptor complex (PMID: 21525241).

## Storage

Storage:

Store at -80°C.

The product is shipped with ice packs. Upon receipt, store it immediately at -80°C

Storage Buffer:

100% PBS pH 7.3

For technical support and original validation data for this product please contact:

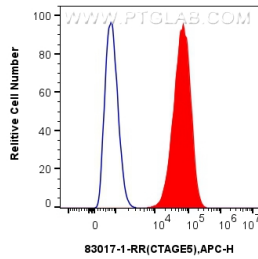
T: 4006900926

E: [Proteintech-CN@ptglab.com](mailto:Proteintech-CN@ptglab.com)

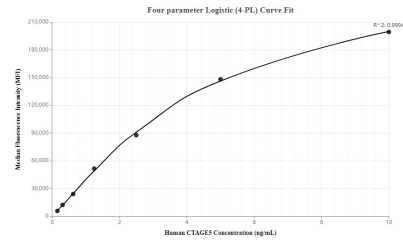
W: [ptgcn.com](http://ptgcn.com)

This product is exclusively available under Proteintech Group brand and is not available to purchase from any other manufacturer.

## Selected Validation Data



1x10<sup>6</sup> HUVEC cells were intracellularly stained with 0.25 ug Anti-Human CTAGE5 (83017-1-RR, Clone:230262E6) and APC-Conjugated AffiniPure Goat Anti-Rabbit IgG(H+L)(red), or 0.25 ug Rabbit IgG control Rabbit PolyAb (30000-O-AP) (blue). Cells were fixed with 4% PFA and permeabilized with Flow Cytometry Perm Buffer (PF00011-C). This data was developed using the same antibody clone with 83017-1-PBS in a different storage buffer formulation.



Cytometric bead array standard curve of MP00052-1, CTAGE5 Recombinant Matched Antibody Pair, PBS Only. Capture antibody: 83017-1-PBS. Detection antibody: 83017-3-PBS. Standard: SY01342. Range: 0.156-10 ng/mL.