

For Research Use Only

Mouse CD68 Recombinant antibody, PBS Only (Detector)

Catalog Number: 83014-2-PBS



Basic Information

Catalog Number:

83014-2-PBS

Size:

1mg/ml

Source:

Rabbit

Isotype:

IgG

GenBank Accession Number:

NM_001291058.1

GeneID (NCBI):

12514

UNIPROT ID:

P31996-1

Full Name:

CD68 antigen

Calculated MW:

35 kDa

Purification Method:

Protein A purification

CloneNo.:

230504E9

Applications

Tested Applications:

Cytometric bead array, Sandwich ELISA, Indirect ELISA,
Sample test

Species Specificity:

mouse

Background Information

Storage

Storage:

Store at -80°C.

The product is shipped with ice packs. Upon receipt, store it immediately at -80°C

Storage Buffer:

100% PBS pH 7.3

For technical support and original validation data for this product please contact:

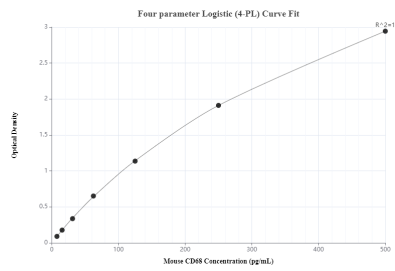
T: 4006900926

E: Proteintech-CN@ptglab.com

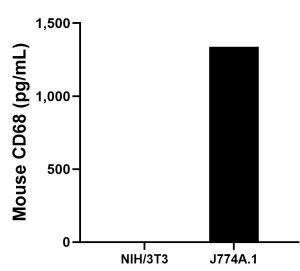
W: ptgcn.com

This product is exclusively available under Proteintech Group brand and is not available to purchase from any other manufacturer.

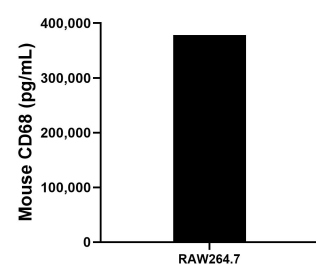
Selected Validation Data



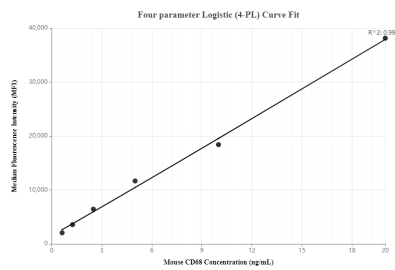
Sandwich ELISA standard curve of MP00015-4, Mouse CD68 Recombinant Matched Antibody Pair - PBS only. 83014-6-PBS was coated to a plate as the capture antibody and incubated with serial dilutions of standard Eg0787. 83014-6-PBS was HRP conjugated as the detection antibody. Range: 7.8-500 pg/mL



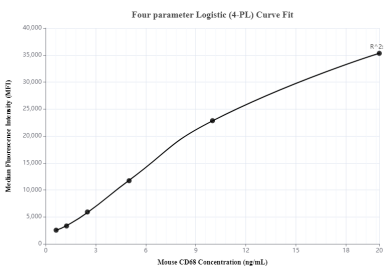
NIH/3T3 mouse embryo fibroblasts were cultured in DMEM supplemented with 10% fetal bovine serum, 2.5 mM L-glutamine, 100 U/mL penicillin and 100 μ g/mL streptomycin sulfate. An aliquot of the cell culture supernatant was removed, assayed for mouse CD68 and measured 3.5 pg/mL J774A.1 mouse reticulum cell sarcoma macrophage cells were cultured in DMEM supplemented with 10% fetal bovine serum, 2.5 mM L-glutamine, 100 U/mL



The mouse CD68 concentration was determined to be 378,104.1 pg/mL in RAW264.7 cell extract based on a 4.2 mg/mL extract load.



Cytometric bead array standard curve ofMP00015-1, Mouse CD68 Recombinant Matched Antibody Pair, PBS Only. Capture antibody: 83014-3-PBS. Detection antibody: 83014-2-PBS. Standard: Eg0787. Range: 0.625-20 ng/mL



Cytometric bead array standard curve ofMP00015-2, Mouse CD68 Recombinant Matched Antibody Pair, PBS Only. Capture antibody: 83014-4-PBS. Detection antibody: 83014-2-PBS. Standard: Eg0787. Range: 0.625-20 ng/mL