

GCSH Recombinant antibody

Catalog Number: 83012-5-RR

Basic Information

Catalog Number:

83012-5-RR

Size:

1000 µg/ml

Source:

Rabbit

Isotype:

IgG

Immunogen Catalog Number:

AG10174

GenBank Accession Number:

BC000790

GeneID (NCBI):

2653

UNIPROT ID:

P23434

Full Name:glycine cleavage system protein H
(aminomethyl carrier)**Calculated MW:**

19 kDa

Observed MW:

~15 kDa

Purification Method:

Protein A purification

CloneNo.:

230505A3

Recommended Dilutions:

WB 1:5000-1:50000

Applications

Tested Applications:

WB, ELISA

Species Specificity:

Human

Positive Controls:

WB : HEK-293 cells, MCF-7 cells, HeLa cells

Background Information

GCSH (Glycine cleavage system H protein, mitochondrial) is a component of the glycine cleavage system loosely associated with the mitochondrial inner membrane and has lipoic acid as a prosthetic group. The full-length GCSH cDNA encodes a precursor protein of 173 amino acids and a mature protein of 125 amino acids. The lipoylation of H-protein occurs in mitochondria which probably contain an activated form of lipoic acid as well as other components required for the transfer of lipoic acid to the protein (PMID:2211640). Defects in GCSH are a cause of non-ketotic hyperglycinemia (NKH).

Storage

Storage:

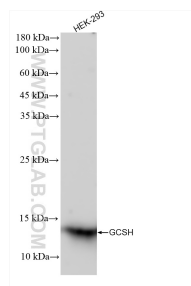
Store at -20°C. Stable for one year after shipment.

Storage Buffer:

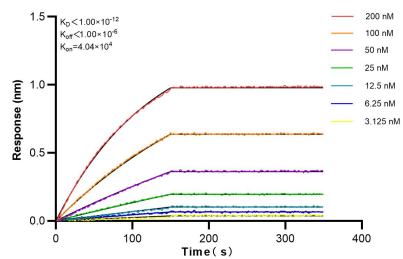
PBS with 0.02% sodium azide and 50% glycerol pH 7.3.

Aliquoting is unnecessary for -20°C storage

Selected Validation Data



HEK-293 cells were subjected to SDS PAGE followed by western blot with 83012-5-RR (GCSH antibody) at dilution of 1:10000 incubated at room temperature for 1.5 hours.



Biolayer interferometry (BLI) kinetic assays of 83012-5-RR against Human GCSH were performed. The affinity constant is below 1 pM.