

For Research Use Only

COL6A3 Recombinant antibody

Catalog Number: 83010-1-RR



Basic Information

Catalog Number:

83010-1-RR

Concentration:

1000 ug/ml

Source:

Rabbit

Isotype:

IgG

Immunogen Catalog Number:

AG34752

GenBank Accession Number:

NM_004369

GeneID (NCBI):

1293

UNIPROT ID:

P12111

Full Name:

collagen, type VI, alpha 3

Calculated MW:

344 kDa

Observed MW:

300 kDa

Purification Method:

Protein A purification

CloneNo.:

230540A11

Recommended Dilutions:

WB 1:5000-1:50000

Applications

Tested Applications:

WB, ELISA

Species Specificity:

human

Positive Controls:

WB : A375 cells,

Background Information

COL6A3 belongs to the type VI collagen family. Collagen VI acts as a cell-binding protein. It is expected to be expressed in smooth muscle. And the calculated molecular weight of COL6A3 is 343 kDa. The protein has similar expression in obese and T2DM (2 patients, and it regulates the chemotaxis and inflammation of macrophages in adipose tissue. Its expression is also related to weight gain. The expression of this protein in adipocytes is related to insulin resistance, which is believed to depend on PPAR (peroxisome proliferator-activated receptor) α -mediated adipocyte development (PMID: 25337653). Defects in COL6A3 are a cause of Bethlem myopathy (BM). Defects in COL6A3 are a cause of Ullrich congenital muscular dystrophy (UCMD) which also known as Ullrich scleroatonic muscular dystrophy. This antibody is specific to COL6A3.

Storage

Storage:

Store at -20°C. Stable for one year after shipment.

Storage Buffer:

PBS with 0.02% sodium azide and 50% glycerol

Aliquoting is unnecessary for -20°C storage

For technical support and original validation data for this product please contact:

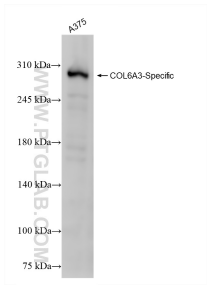
T: 4006900926

E: Proteintech-CN@ptglab.com

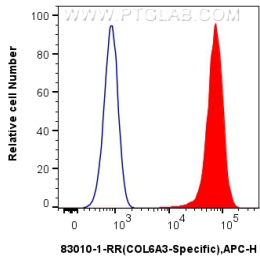
W: ptgcn.com

This product is exclusively available under Proteintech Group brand and is not available to purchase from any other manufacturer.

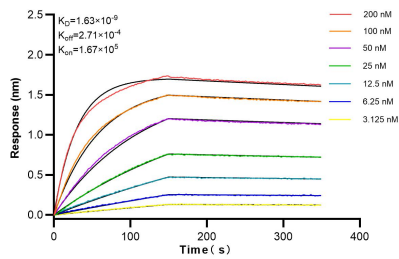
Selected Validation Data



A375 cells were subjected to SDS PAGE followed by western blot with 83010-1-RR (COL6A3-Specific antibody) at dilution of 1:10000 incubated at room temperature for 1.5 hours.



1x10⁶ HeLa cells were intracellularly stained with 0.25 ug COL6A3-Specific Recombinant antibody (83010-1-RR, Clone:230540A11) and APC-Conjugated Goat Anti-Rabbit IgG(H+L)(red), or 0.25 ug Isotype Control (blue). Cells were fixed with 4% PFA and permeabilized with Flow Cytometry Perm Buffer (PF00011-C).



Biolayer interferometry (BLI) kinetic assays of 83010-1-RR against Human COL6A3-Specific were performed. The affinity constant is 1.63 nM.